

**USE QNH**

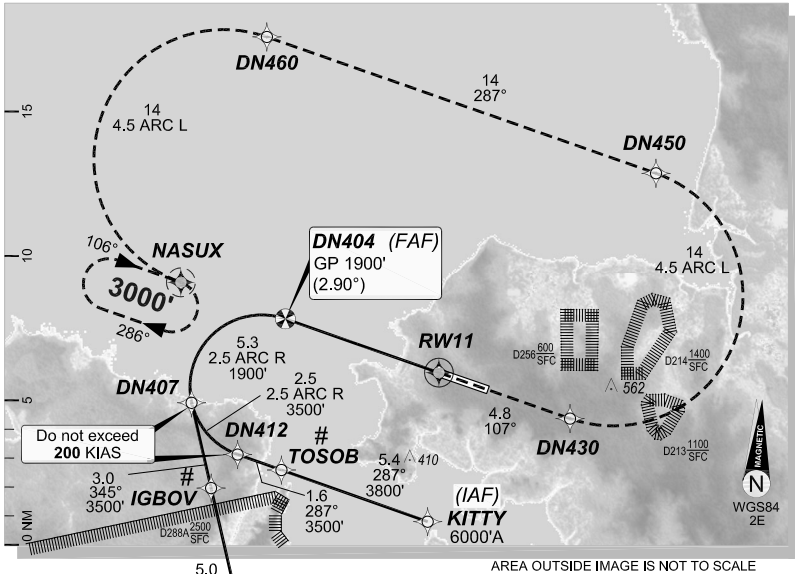
RNAV-P (RNP) RWY 11  
**DARWIN, NT (YPDN)**

**5 NOV 2020**

GE PROPRIETARY AND CONFIDENTIAL

ATIS <b>128.25</b>	APP-E <b>125.2</b> APP-W <b>134.1</b>	SMC <b>121.8</b>	TWR <b>133.1</b>	DEP <b>123.0</b>
RNAV (RNP) <b>RNV P 11</b>	Apt Elev. <b>103'</b> TDZE <b>96'</b>	DN404 (FAF) <b>GP 1900'</b> (2.90°)	Trans Level <b>FL110</b>	

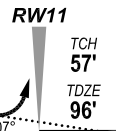
# Latest position where the aircraft can join the procedure.



**MISSED APPROACH:**

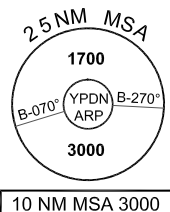
Climb to 3000' via the RNAV (RNP) Missed Approach track to NASUX.  
(IAF) **UPSEN** 4800'A

**DN404**  
GP 1900'  
(1804')  
(2.90°)



**NOTES:**

1. YPDN ACT QNH RQ



COPYRIGHT © NAVERUS, INC., 2020. ALL RIGHTS RESERVED.

5.6				RNP <b>0.30</b>
				DA(H) <b>354'</b> (258')
			C	<b>1300m</b>

**FOR CASA APPROVED OPERATORS ONLY**

Changes: Mag Var 2E, TF's 286° to 287°/106° to 107°/344° to 345°, NASUX hold 106°.

PDNGN06-165

**DO NOT USE FOR NAVIGATION**

