

USE QNH

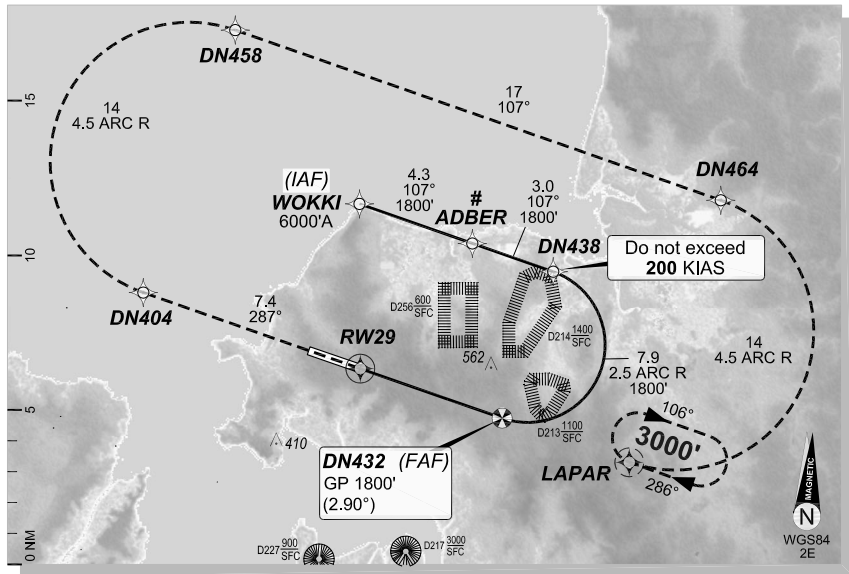
RNAV-M (RNP) RWY 29
DARWIN, NT (YPDN)

5 NOV 2020

GE PROPRIETARY AND CONFIDENTIAL

ATIS 128.25	APP-E APP-W 125.2 134.1	SMC 121.8	TWR 133.1	DEP 123.0
RNAV (RNP) RNV M 29	Apt Elev. 103' TDZE 81'	DN432 (FAF) GP 1800' (2.90°)	Trans Level FL110	

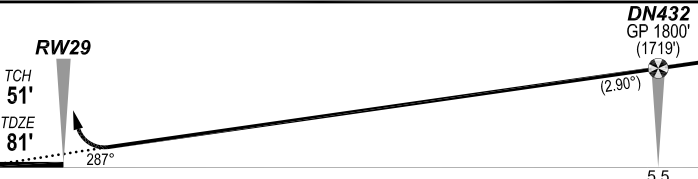
Latest position where the aircraft can join the procedure.



MISSED APPROACH:

Climb to **3000'** via the RNAV (RNP) Missed Approach track to LAPAR.

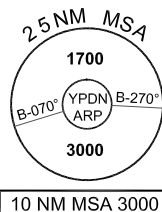
COPYRIGHT © NAVERUS, INC., 2020. ALL RIGHTS RESERVED.



NOTES:

1. YPDN ACT QNH RQ

RNP 0.15		RNP 0.30	
DA(H) 396' (315')		DA(H) 411' (330')	
HIALS out		HIALS out	
C	700m 1600m	C	800m 1700m



FOR CASA APPROVED OPERATORS ONLY

Changes: Mag Var 2E, TF's adjusted 286° to 287°/106° to 107°, LAPAR hold 286°.

PDNGN05-165

DO NOT USE FOR NAVIGATION

