

USE QNH

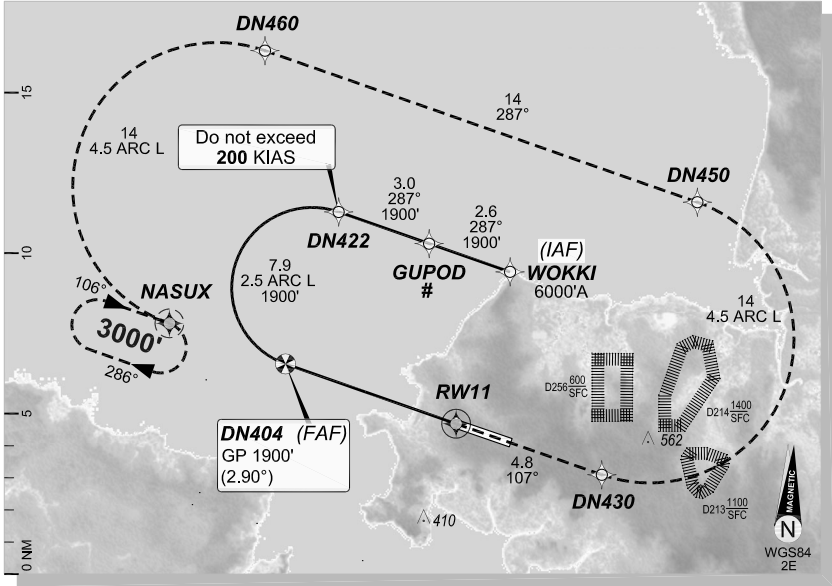
**RNAV-M (RNP) RWY 11
DARWIN, NT (YPDN)**

5 NOV 2020

GE PROPRIETARY AND CONFIDENTIAL

ATIS 128.25	APP-E APP-W 125.2 134.1	SMC 121.8	TWR 133.1	DEP 123.0
RNAV (RNP) RNV M 11	Apt Elev. 103' TDZE 96'	DN404 (FAF) GP 1900' (2.90°)	Trans Level FL110	

Latest position where the aircraft can join the procedure.



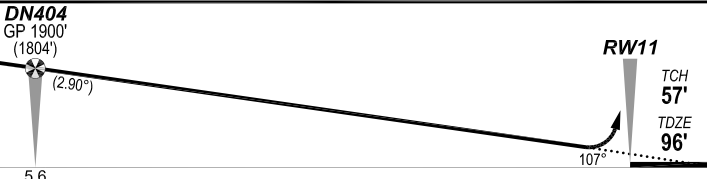
MISSED APPROACH:

Climb to **3000'** via the RNAV (RNP) Missed Approach track to **NASUX**.

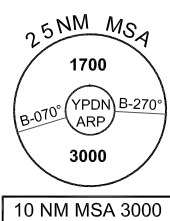
NOTES:

1. YPDN ACT QNH RQ

COPYRIGHT © NAVERUS, INC., 2020. ALL RIGHTS RESERVED.



DN404 GP 1900' (1804') (2.90°)		RW11 TCH 57' TDZE 96'	
5.6		107°	
		RNP 0.30	
		DA(H) 354' (258')	
		C 1300m	



FOR CASA APPROVED OPERATORS ONLY

Changes: Mag Var 2E, TF's adjusted 286° to 287°/106° to 107°, NASUX hold 106°.

PDNGN04-165

DO NOT USE FOR NAVIGATION

