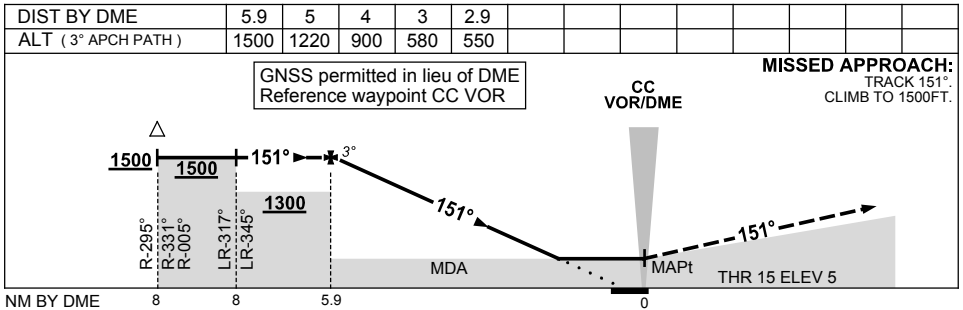
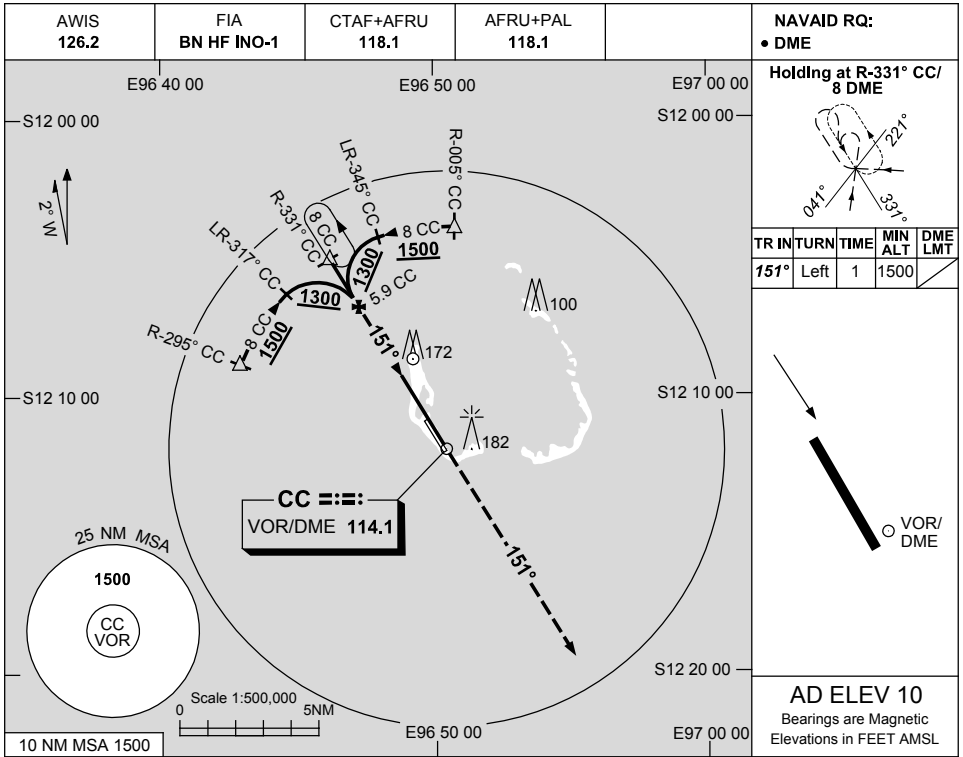


USE QNH

VOR-Z RWY 15

1 MAR 2018

COCOS (KEELING) ISLAND, AUSTRALIA (YPCC)



CATEGORY	A	B	C	D
S-I VOR/DME	550 (540-3.1)			
CIRCLING	610 (600-2.4)	710 (700-4.0)	800 (790-5.0)	
ALTERNATE	(1100-4.4)		(1200-6.0) (1290-7.0)	

1. MAX IAS:
INITIAL: 210KT.

Changes: REVISED PROC.

PCCVO03-154