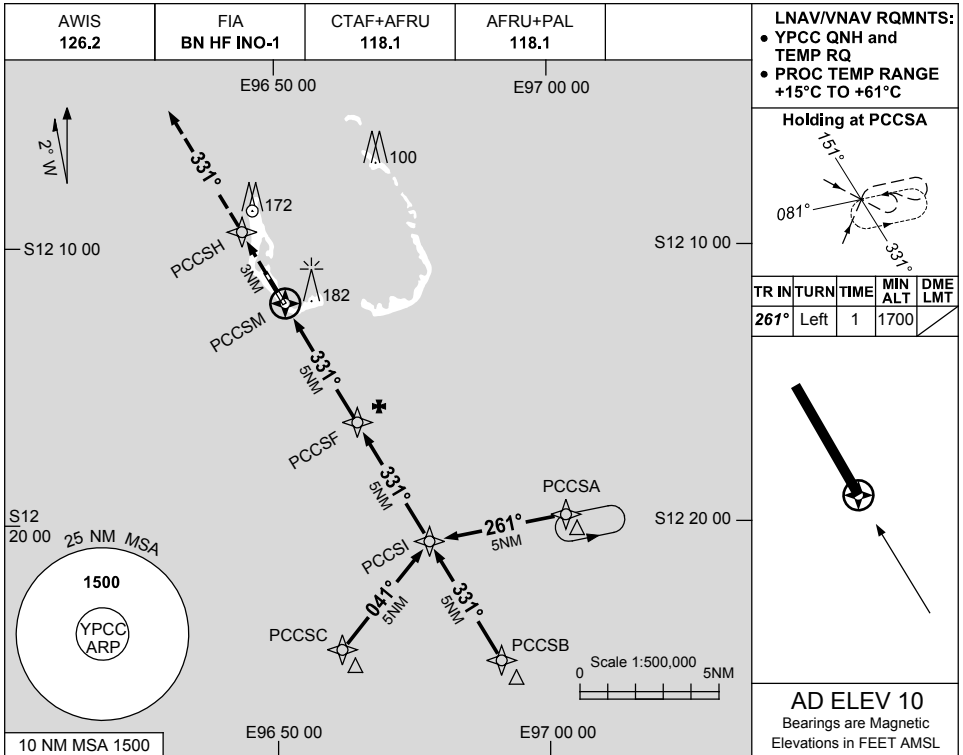


USE QNH

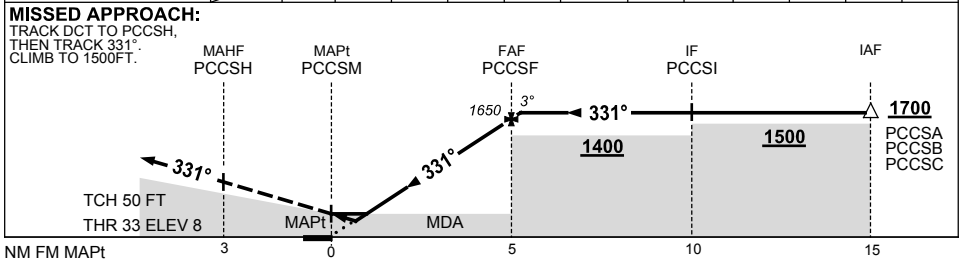
RNAV-Z (GNS) RWY 33

1 MAR 2018

**COCOS (KEELING) ISLAND, AUSTRALIA (YPCC)**



NM TO NEXT WPT	PCCSM	1	1.6	2	3	4	PCCSF	0.2				
ALT (3° APCH PATH)		370	550	690	1010	1330	1650	1700				



**NOTES**

CATEGORY	A	B	C	D
LNAV/VNAV	<b>370</b> (362-2.0)			
LNAV	<b>550</b> (540-3.1)			
CIRCLING	<b>610</b> (600-2.4)	<b>710</b> (700-4.0)		<b>800</b> (790-5.0)
ALTERNATE	(1100-4.4)		(1200-6.0) (1290-7.0)	

1. MAX IAS:  
INITIAL : 210KT.

Changes: LNAV/VNAV, PCCSH FLY-BY.

PCCGN02-154