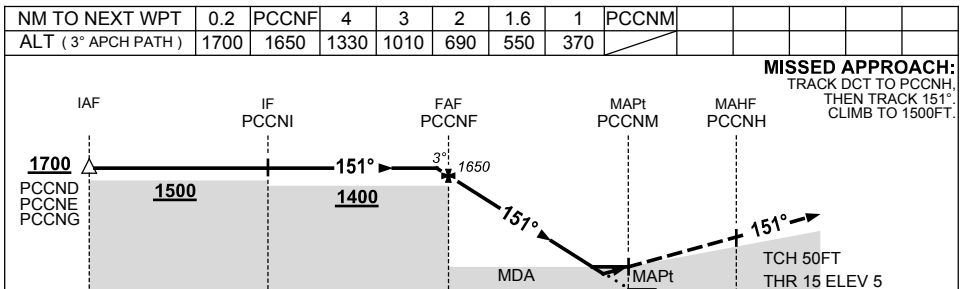
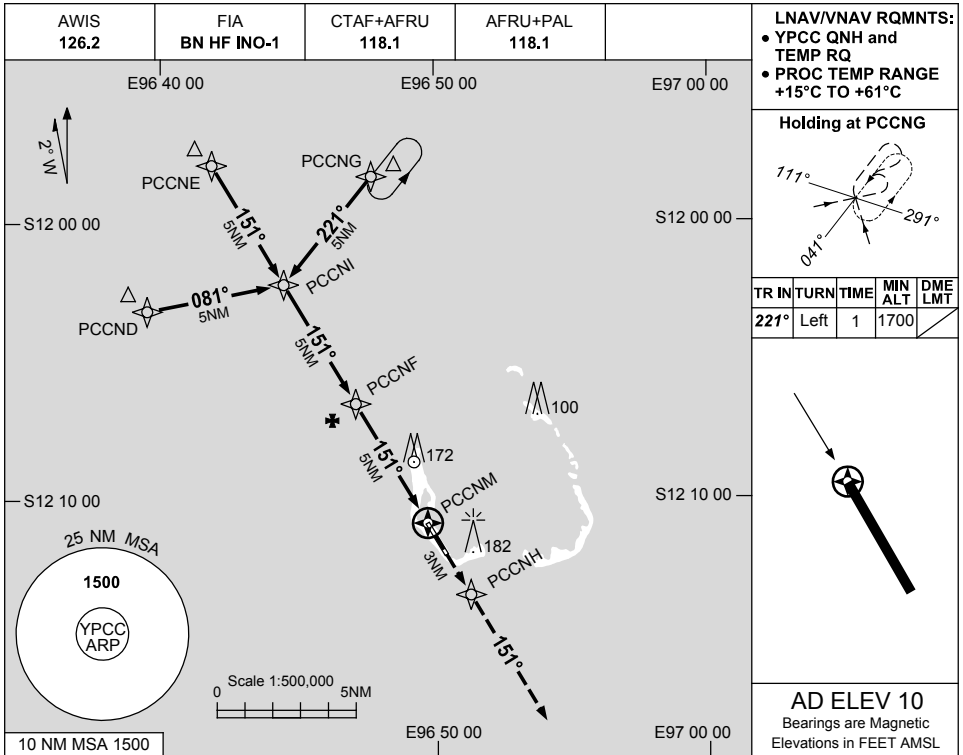


USE QNH

RNAV-Z<sub>(GNS)</sub> RWY 15

1 MAR 2018

**COCOS (KEELING) ISLAND, AUSTRALIA (YPCC)**



CATEGORY	A	B	C	D
LNAV/VNAV	<b>370</b> (365-2.0)			
LNAV	<b>550</b> (540-3.1)			
CIRCLING	<b>610</b> (600-2.4)	<b>710</b> (700-4.0)	<b>800</b> (790-5.0)	
ALTERNATE	(1100-4.4)	(1200-6.0)	(1290-7.0)	

1. MAX IAS:  
INITIAL : 210KT.

Changes: LNAV/VNAV, PCCNH FLY-BY. PCCGN01-154