

**STANDARD INSTRUMENT ARRIVAL (STAR)
RAYNA TWO VICTOR ARRIVAL (RNAV)
ADELAIDE, SA (YPAD)**

1 MAR 2018

ATIS 116.4 134.5	APP 128.6	TWR 120.5	SMC 121.7	Bearings are Magnetic Elevations in FEET AMSL
---------------------	--------------	--------------	--------------	--

NOT TO SCALE



OJJAY
S32 28 40
E137 18 14

4600
132°
(67)

ZIPPY
S33 14 16
E138 05 40

4600
133°
(8)

ERITH
S34 11 55
E138 26 38

156°
161°
(27)

KLAVA
S34 11 45
E138 30 26

**IAS AT
230KT**

RAYNA
S34 38 12
E138 36 22

**MAX IAS
185KT**

3800
3600
156°
(27)

AD
VOR/DME 116.4

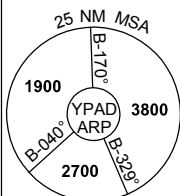
3000
150°
(13)

MOPRI
S34 49 56
E138 41 56

VISUAL
222°
(10)

**SPEED
MAX IAS 250KT
BELOW 10,000FT**

ATC APCH SPEEDS	
NM FM TD	SPEED KT
MOPRI	185 -160
5	160 -150



10 NM MSA 3800

TRANSITIONS:

OJJAY: From OJJAY to RAYNA
Track 132° to ZIPPY
Turn RIGHT, track 156° to ERITH
Track 156° RAYNA
Then follow ARRIVAL instructions

KLAVA: From KLAVA to RAYNA
Track 161° to RAYNA
Then follow ARRIVAL instructions

ARRIVAL: RAYNA TWO

RWY 23 VICTOR: (HJ ONLY)
IAS AT 230KT from RAYNA
• From RAYNA track 150° to MOPRI
MAX IAS 185KT from MOPRI
• Turn RIGHT, track VISUAL for final RWY 23

**COMMUNICATIONS FAILURE: PROCEDURE IN IMC
IF ABLE CTC AD APP 08-8238-7992**

- Squawk 7600, comply with vertical navigation requirements, but not below MSA.
- Track via the latest STAR clearance to the nominated runway, then fly the most suitable approach in accordance with ERSA EMERG Section 1.5.

Changes: MSA.

PADSR31-154