

**STANDARD INSTRUMENT ARRIVAL (STAR)
DRINA NINE VICTOR ARRIVAL (RNAV)
ADELAIDE, SA (YPAD)**

1 MAR 2018

ATIS 116.4 134.5	APP 118.2	TWR 120.5	SMC 121.7	Bearings are Magnetic Elevations in FEET AMSL
---------------------	--------------	--------------	--------------	--

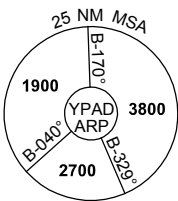
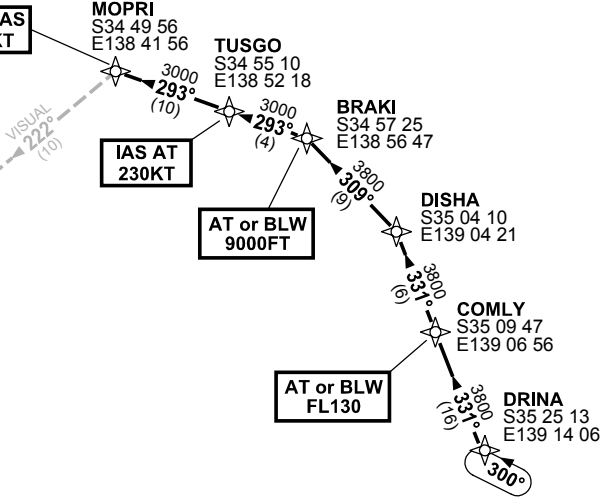
NOT TO SCALE



ATC APCH SPEEDS	
NM FM TD	SPEED KT
MOPRI	185 -160
5	160 -150

**SPEED
MAX IAS 250KT
BELOW 10,000FT**

AD **VOR/DME 116.4**



10 NM MSA 3800

ARRIVAL: DRINA NINE

RWY 23 VICTOR:

- From DRINA track 331° to COMLY
- Cross** COMLY AT or BLW FL130
- Track 331° to DISHA
- Turn LEFT, track 309° to BRAKI
- Cross** BRAKI AT or BLW 9000FT
- Turn LEFT, track 293° to TUSGO
- IAS AT 230KT from TUSGO
- Track 293° to MOPRI
- MAX IAS 185KT from MOPRI
- Turn LEFT, intercept VISUAL final RWY 23

**COMMUNICATIONS FAILURE: PROCEDURE IN IMC
IF ABLE CTC AD APP 08-8238-7992**

- Squawk 7600, comply with vertical navigation requirements, but not below MSA.
- Track via the latest STAR clearance to the nominated runway, then fly the most suitable approach in accordance with ERS A EMERG Section 1.5.

Changes: MSA.

PADSR28-154