

**STANDARD INSTRUMENT ARRIVAL (STAR)
BLACK TWO X-RAY ARRIVAL (RNAV)
ADELAIDE, SA (YPAD)**

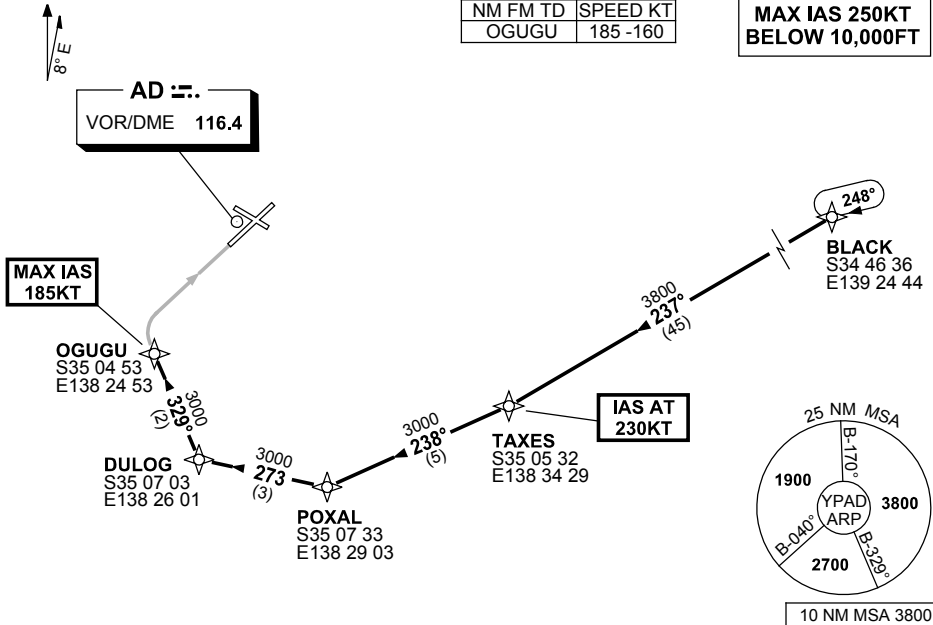
9 NOV 2017

ATIS 116.4 134.5	APP (SE) 118.2	TWR 120.5	Bearings are Magnetic Elevations in FEET AMSL
---------------------	-------------------	--------------	--

NOT TO SCALE

ATC APCH SPEEDS	
NM FM TD	SPEED KT
OGUGU	185 -160

**SPEED
MAX IAS 250KT
BELOW 10,000FT**



ARRIVAL: BLACK TWO

RWY 05 XRAY:

- From BLACK track 237° to TAXES
IAS AT 230KT from TAXES
- Track 238° to POXAL
- Turn RIGHT, track 273° to DULOG
- Turn RIGHT, track 329° to OGUGU
MAX IAS 185KT from OGUGU
- Track via RNAV-X (RNP) RWY 05

**COMMUNICATIONS FAILURE: PROCEDURE IN IMC
IF ABLE CTC AD APP 08-8238-7992**

- Squawk 7600, comply with vertical navigation requirements, but not below MSA.
- Track via the latest STAR clearance to the nominated runway, then fly the most suitable approach in accordance with ERSA EMERG Section 1.5.

Changes: CHART NAME, PROC NUMBER, APCH SPEEDS.

PADSR24-153