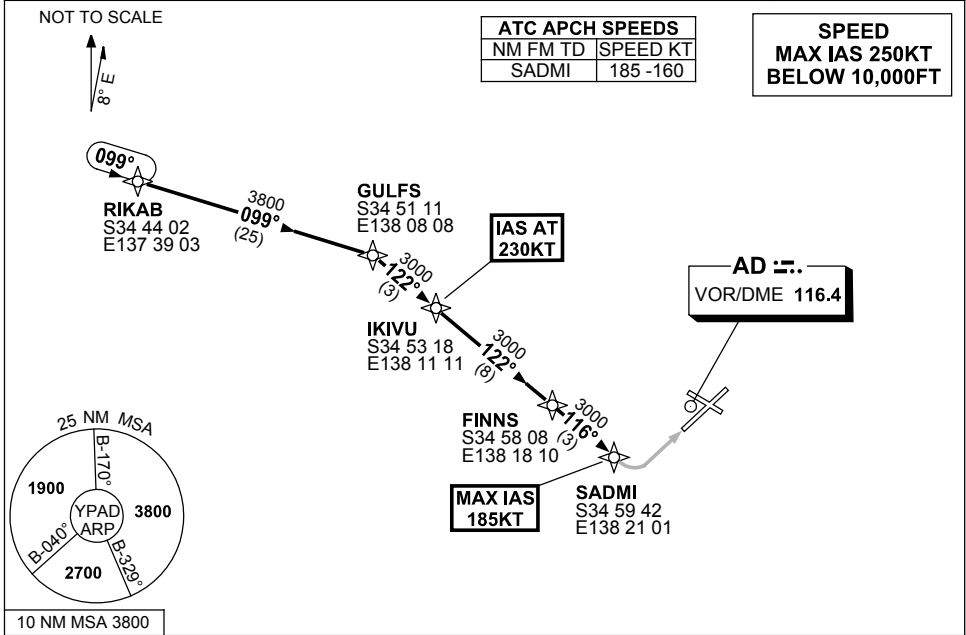


**STANDARD INSTRUMENT ARRIVAL (STAR)
RIKAB SEVEN WHISKEY ARRIVALS (RNAV)
ADELAIDE, SA (YPAD)**

1 MAR 2018

ATIS 116.4 134.5	APP 124.2	TWR 120.5	SMC 121.7	Bearings are Magnetic Elevations in FEET AMSL
---------------------	--------------	--------------	--------------	--



ARRIVAL: RIKAB SEVEN

RWY 05 WHISKEY:

- Track 099° to GULFS
- Turn RIGHT, track 122° to IKIVU
IAS AT 230KT from IKIVU
- Track 122° to FINNS
- From FINNS turn LEFT track 116° to SADMI
MAX IAS 185KT from SADMI
- Track via RNAV-W (RNP) RWY 05

COMMUNICATIONS FAILURE: PROCEDURE IN IMC

IF ABLE CTC AD APP 08-8238-7992

- Squawk 7600, comply with vertical navigation requirements, but not below MSA.
- Track via the latest STAR clearance to the nominated runway, then fly the most suitable approach in accordance with ERS A EMERG Section 1.5.

Changes: MSA.

PADSR18-154