

**STANDARD INSTRUMENT ARRIVAL (STAR)
SURGN TWO ARRIVAL (NON-JET)(RNAV)
ADELAIDE, SA (YPAD)**

1 MAR 2018

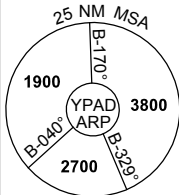
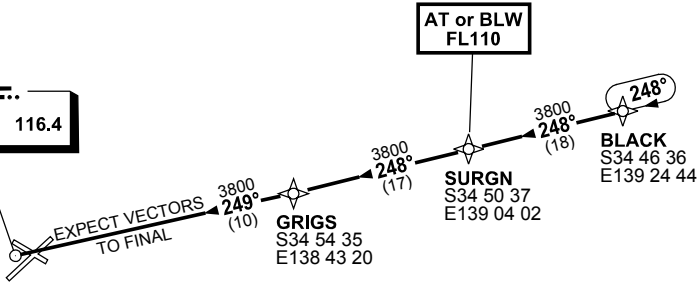
ATIS 116.4 134.5	APP 118.2	TWR 120.5	SMC 121.7	Bearings are Magnetic Elevations in FEET AMSL
---------------------	--------------	--------------	--------------	--

NOT TO SCALE



**SPEED
MAX IAS 250KT
BELOW 10,000FT**

AD
VOR/DME 116.4



ATC APCH SPEEDS	
NM FM TD	SPEED KT
20	AT 230
10	185-160

10 NM MSA 3800

TRANSITION:

BLACK: From BLACK track 248° to SURGN
Cross SURGN AT or BLW FL110
Then follow ARRIVAL instructions

ARRIVAL: SURGN TWO

ALL RWYS:

- From SURGN track 248° to GRIGS
- Track 249° to AD VOR
- Expect radar vectors to final approach

**COMMUNICATIONS FAILURE: PROCEDURE IN IMC
IF ABLE CTC AD APP 08-8238-7992**

- Squawk 7600, comply with vertical navigation requirements, but not below MSA.
- Track via the latest STAR clearance to the nominated runway, then fly the most suitable approach in accordance with ERSA EMERG Section 1.5.

Changes: MSA.

PADSR17-154