

**STANDARD INSTRUMENT ARRIVAL (STAR)  
ATPIP TWO ARRIVAL (NON-JET) (RNAV)  
ADELAIDE, SA (YPAD)**

**1 MAR 2018**

|                     |              |              |              |  |
|---------------------|--------------|--------------|--------------|--|
| ATIS<br>116.4 134.5 | APP<br>118.2 | TWR<br>120.5 | SMC<br>121.7 | Bearings are Magnetic<br>Elevations in FEET AMSL |
|---------------------|--------------|--------------|--------------|--|

NOT TO SCALE



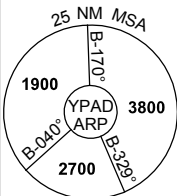
**AD** **VOR/DME 116.4**

**IAD** **ILS 109.7**

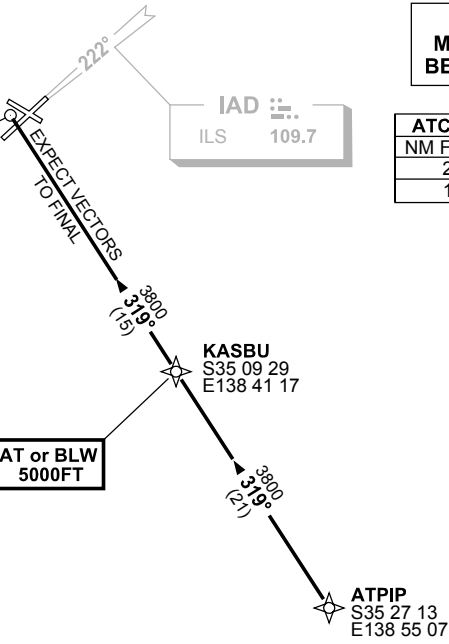
**SPEED  
MAX IAS 250KT  
BELOW 10,000FT**

| ATC APCH SPEEDS |          |
|-----------------|----------|
| NM FM TD        | SPEED KT |
| 20              | AT 230   |
| 10              | 185-160  |

**AT or BLW  
5000FT**



10 NM MSA 3800



**KASBU**  
S35 09 29  
E138 41 17

**ATPIP**  
S35 27 13  
E138 55 07

**ARRIVAL: ATPIP TWO**

- ALL RWYS:** From ATPIP track 319° to KASBU  
**Cross** KASBU AT or BLW 5000FT
- Track 319° to AD VOR  
 Expect radar vectors to final approach

**COMMUNICATIONS FAILURE: PROCEDURE IN IMC  
IF ABLE CTC AD APP 08-8238-7992**

- Squawk 7600, comply with vertical navigation requirements, but not below MSA.
- Track via the latest STAR clearance to the nominated runway, then fly the most suitable approach in accordance with ERSA EMERG Section 1.5.

Changes: MSA.

PADSR16-154