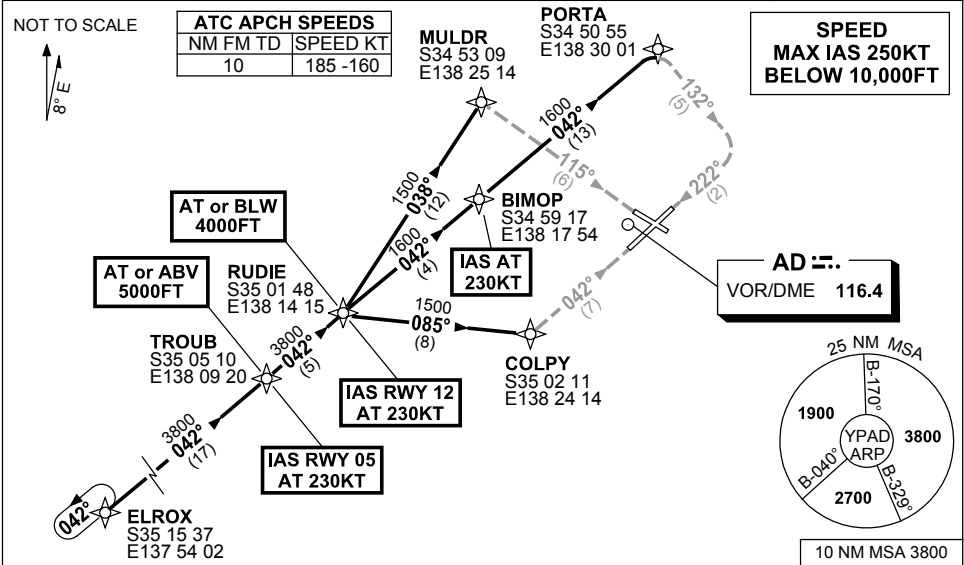


**STANDARD INSTRUMENT ARRIVAL (STAR)
ELROX FOUR VICTOR ARRIVAL (NON-JET) (RNAV)
ADELAIDE, SA (YPAD)**

24 MAY 2018

ATIS 116.4 134.5	APP 124.2	TWR 120.5	SMC 121.7	Bearings are Magnetic Elevations in FEET AMSL
---------------------	--------------	--------------	--------------	--



ARRIVAL:

ELROX FOUR

From ELROX track 042° to TROUB
Cross TROUB AT or ABV 5000FT, then

RWY 05 VICTOR:

IAS AT 230KT from TROUB
From TROUB, track 042° to RUDIE
Cross RUDIE AT or BLW 4000FT
• Turn RIGHT, track 085° to COLPY
• Turn LEFT, track 042° VISUAL for final RWY 05

RWY 12 VICTOR:

From TROUB, track 042° to RUDIE
Cross RUDIE AT or BLW 4000FT
IAS AT 230KT from RUDIE
• Track 038° to MULDR
• Turn RIGHT, track 115° VISUAL for final RWY 12

RWY 23 VICTOR:

From TROUB, track 042° to RUDIE
Cross RUDIE AT or BLW 4000FT
• Track 042° to BIMOP
IAS AT 230KT from BIMOP
• Track 042° to PORTA
• Turn RIGHT, track 132° VISUAL to intercept final RWY 23

NOTE: When instrument APCH required, expect radar vectors after RUDIE to IAF for appropriate instrument APCH

**COMMUNICATIONS FAILURE: PROCEDURE IN IMC
IF ABLE CTC AD APP 08-8238-7992**

- Squawk 7600, comply with vertical navigation requirements, but not below MSA.
- Track via the latest STAR clearance to the nominated runway, then fly the most suitable approach in accordance with ERSA EMERG Section 1.5.