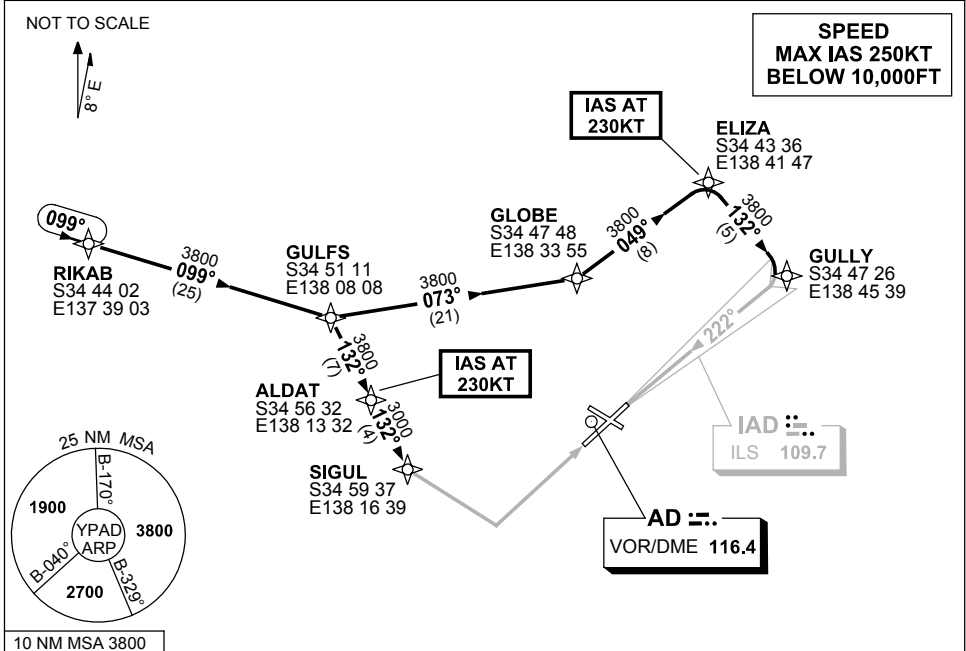


**STANDARD INSTRUMENT ARRIVAL (STAR)
RIKAB SEVEN ALPHA, ZULU ARRIVALS (RNAV)
ADELAIDE, SA (YPAD)**

1 MAR 2018

ATIS 116.4 134.5	APP 124.2	TWR 120.5	SMC 121.7	Bearings are Magnetic Elevations in FEET AMSL
---------------------	--------------	--------------	--------------	--



ARRIVAL: RIKAB SEVEN

RWY 05 ZULU:

- Track 099° to GULFS
- Turn RIGHT, track 132° to ALDAT
IAS AT 230KT from ALDAT
- Track 132° to SIGUL
- Track via RNAV-Z (GNSS) RWY 05

RWY 23 ALPHA:

- Track 099° to GULFS
- Turn LEFT, track 073° to GLOBE
- Turn LEFT, track 049° to ELIZA
IAS AT 230KT from ELIZA
- Turn RIGHT, track 132° to GULLY
- Turn RIGHT, intercept LOC RWY 23

RWY 23 ZULU:

- Track 099° to GULFS
- Turn LEFT, track 073° to GLOBE
- Turn LEFT, track 049° to ELIZA
IAS AT 230KT from ELIZA
- Turn RIGHT, track 132° to GULLY
- Track via RNAV-Z (GNSS) RWY 23

**COMMUNICATIONS FAILURE: PROCEDURE IN IMC
IF ABLE CTC AD APP 08-8238-7992**

- Squawk 7600, comply with vertical navigation requirements, but not below MSA.
- Track via the latest STAR clearance to the nominated runway, then fly the most suitable approach in accordance with ERSA EMERG Section 1.5.

Changes: MSA.

PADSR12-154