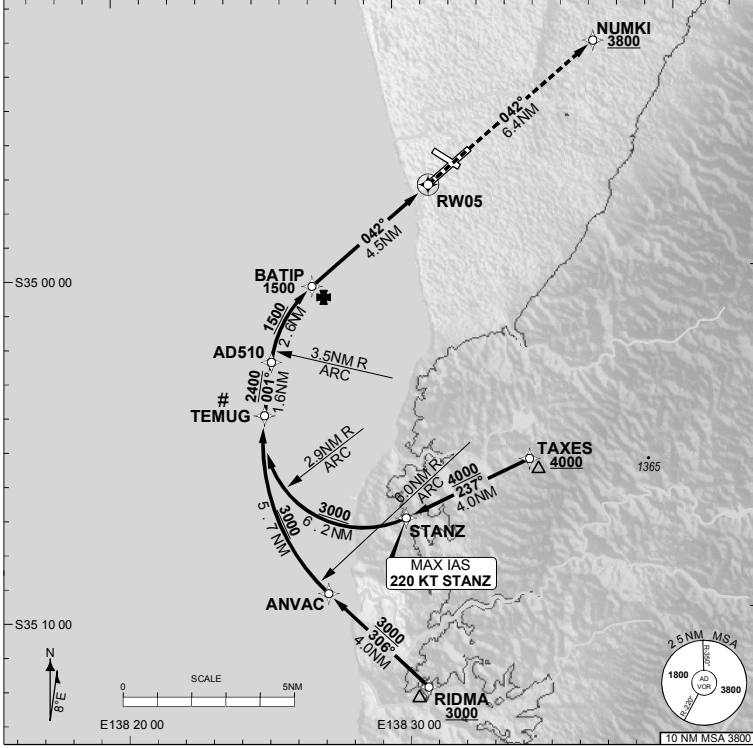


**FOR CASA APPROVED OPERATORS ONLY**

**USE QNH**

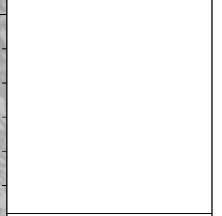
**ADELAIDE, SA (YPAD)**

ATIS <b>116.4 134.5</b>	APP <b>118.2 124.2</b>	TWR <b>120.5</b>	SMC/ACD <b>121.7</b>	RNV M 05 <b>THR ELEV 14</b>	- RF REQ - YPAD ACT QNH REQ - YPAD ACT TEMP REQ - PROC TEMP RANGE 0° TO 43°
----------------------------	---------------------------	---------------------	-------------------------	--------------------------------	-----------------------------------------------------------------------------------------



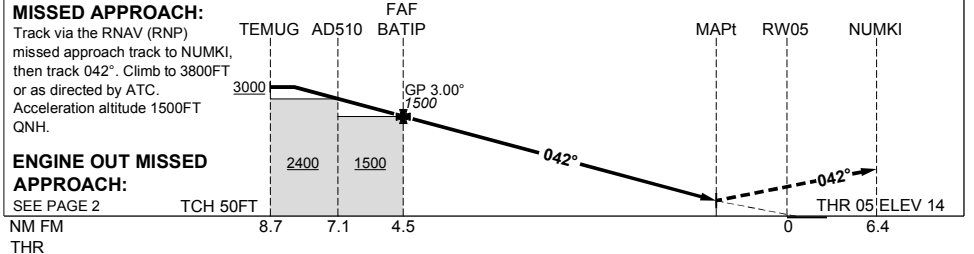
Holding as directed by ATC

TR	INTURN TIME	MIN ALT	DME LMT



**AD ELEV 20**  
Bearings are Magnetic  
Elevations in FEET AMSL

DISTANCE FM THR	TEMUG	AD510	BATIP	1.4	1.2
ALT (3.00° APCH PATH)	3000	2400	1500	502	436



CATEGORY	A	B	C	C/D
MVD			MVD-N	MVD-2
RNP (0.10)			DA(H) <b>436</b> (422)-2.2	DA(H) <b>441</b> (427)-2.2
RNP (0.30)		N/A	DA(H) <b>497</b> (483)-2.6	DA(H) <b>502</b> (488)-2.6
CIRCLING			NOT AUTHORISED	
ALTERNATE				

Changes: NEW PROC.

- NOTES**
- PROC AVBL up to MLW.
  - Lateral transition to MAPCH must not be initiated prior to DA/H POSN.
  - Latest point where ACFT can join the PROC.
  - Minimum MAP gradient (AE) 7.3% to 3800FT.

