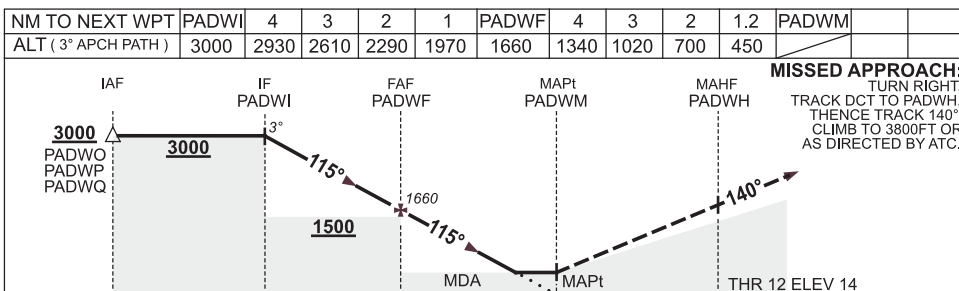
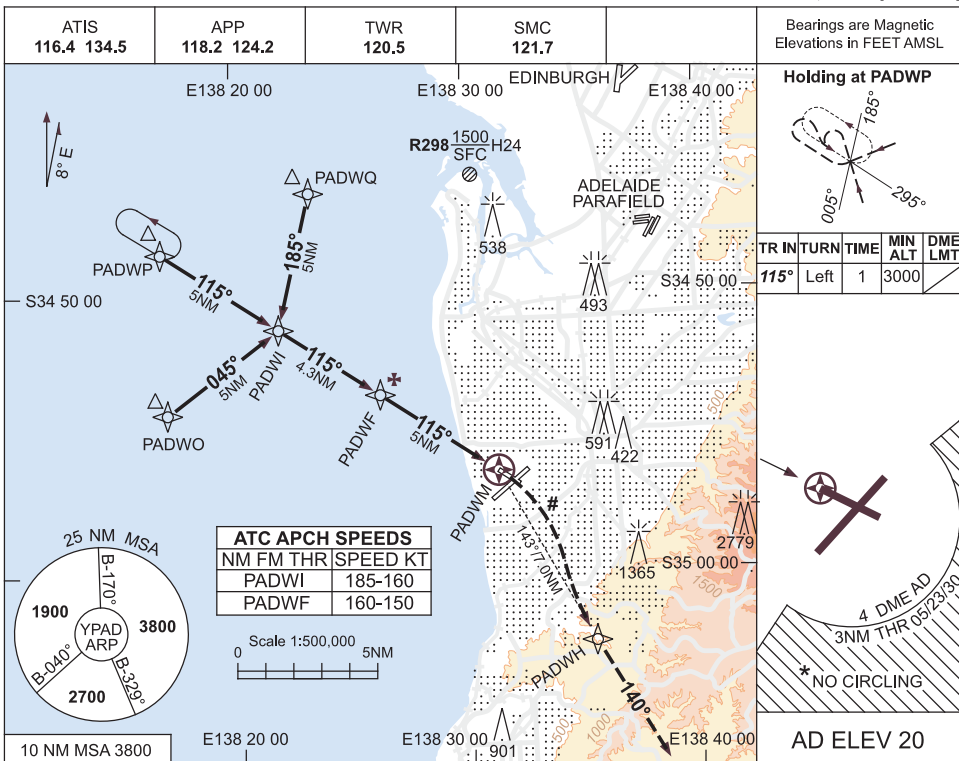


USE QNH

RNAV-Z (GNSS) RWY 12
ADELAIDE, SA (YPAD)

26 MAY 2016



CATEGORY	A	B	C	D
S-I GNSS	450 (430-2.4)			
CIRCLING *	900 (880-2.4)		1000 (980-4.0)	1000 (980-5.0)
ALTERNATE	(1380-4.4)		(1480-6.0)	(1480-7.0)

NOTES

1. MAX IAS: INITIAL : 210KT. # MAP TURN: 190KT.
- * 2. NO CIRCLING S OF RWY 05/23 BEYOND 4 DME AD OR BEYOND 3NM FM THR 05/23/30.
3. COLOUR: SEE SPEC NOTICES.
4. HOLDING MAY NOT BE CONTAINED WITHIN CTA BLW 5000FT.

Changes: ATC SPEEDS, PADWH FLY BY.

PADGN03-147