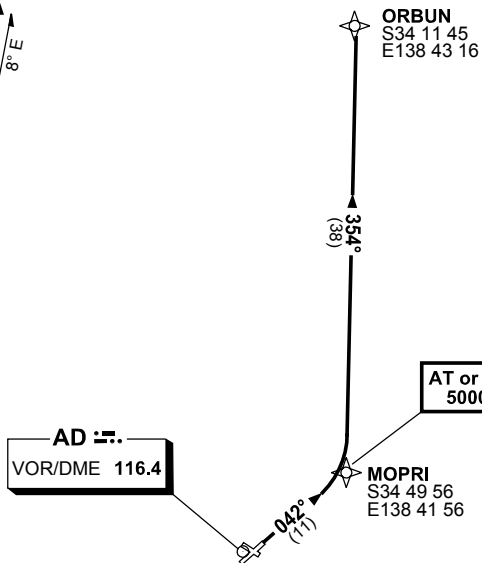


STANDARD INSTRUMENT DEPARTURES (SID)
 ORBUN FIVE (JET) (RNAV)
 ADELAIDE, SA (YPAD)

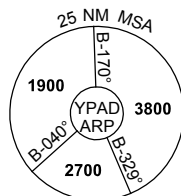
1 MAR 2018

ATIS 116.4 134.5	ACD 126.1	SMC 121.7	TWR 120.5	APP 124.2	Bearings are Magnetic Elevations in FEET AMSL
---------------------	--------------	--------------	--------------	--------------	--

NOT TO SCALE



**SPEED
 MAX IAS 250KT
 BELOW 10,000FT**



10 NM MSA 3800

ORBUN FIVE DEPARTURE

RWY 05

- GRAD 4.4% to 900FT thence 3.3%
- Track 042° to MOPRI
 Cross MOPRI AT or ABV 5000FT
- Turn **LEFT** track 354° to ORBUN,
 thence as cleared