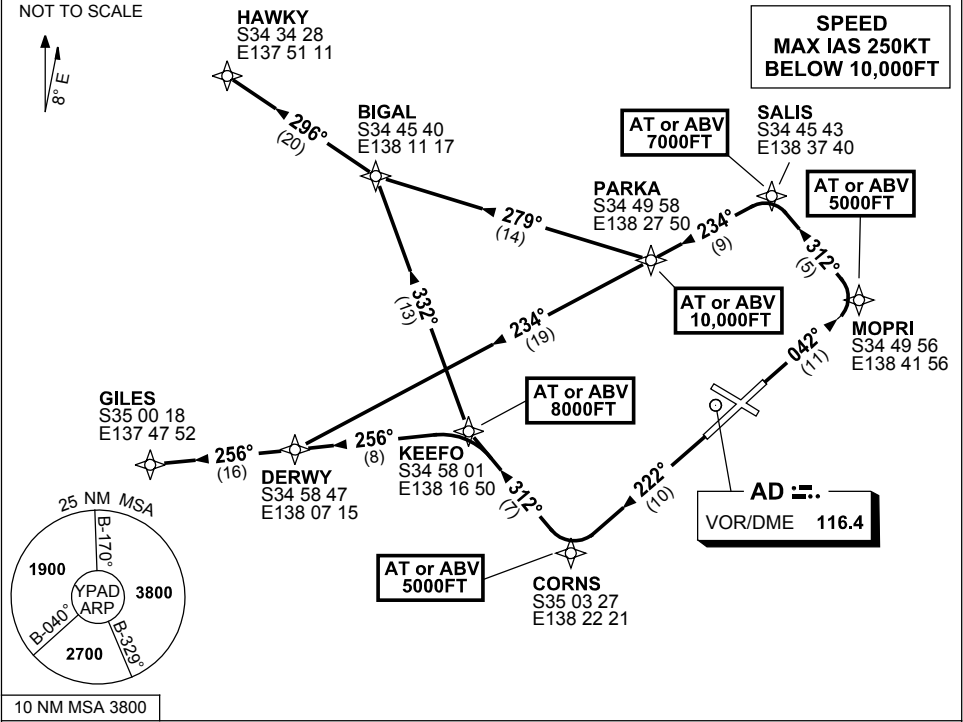


**STANDARD INSTRUMENT DEPARTURES (SID)
RWYS WEST (JET) (RNAV)
ADELAIDE, SA (YPAD)**

1 MAR 2018

ATIS 116.4 134.5	ACD 126.1	SMC 121.7	TWR 120.5	APP 124.2	Bearings are Magnetic Elevations in FEET AMSL
---------------------	--------------	--------------	--------------	--------------	--

NOT TO SCALE



**HAWKY FIVE DEPARTURE
GILES FOUR DEPARTURE**

RWY 05

- GRAD 4.4% to 900FT thence 3.3%
- Track 042° to MOPRI
Cross MOPRI AT or ABV 5000FT
- Turn LEFT track 312° to SALIS
Cross SALIS AT or ABV 7000FT
- Turn LEFT track 234° to PARKA
Cross PARKA AT or ABV 10,000FT

For HAWKY

- Turn RIGHT track 279° to BIGAL
- Turn RIGHT track 296° to HAWKY, thence as cleared

For GILES

- Track 234° to DERWY
- Turn RIGHT track 256° to GILES, thence as cleared

RWY 23

- GRAD 4.7% to 3300FT thence 3.3%
- Track 222° to CORNS
Cross CORNS AT or ABV 5000FT
- Turn RIGHT track 312° to KEEFO
Cross KEEFO AT or ABV 8000FT

For HAWKY

- Turn RIGHT track 332° to BIGAL
- Turn LEFT track 296° to HAWKY, thence as cleared

For GILES

- Turn LEFT track 256° to DERWY
- Track 256° to GILES, thence as cleared