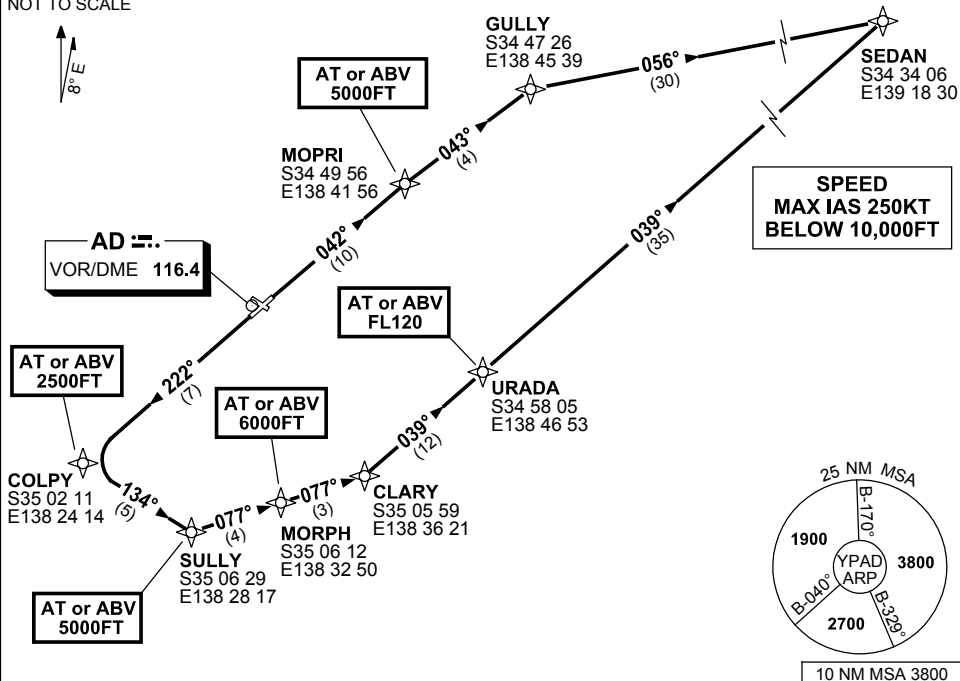


STANDARD INSTRUMENT DEPARTURES (SID)
 SEDAN TWO (JET) (RNAV)
 ADELAIDE, SA (YPAD)

1 MAR 2018

ATIS 116.4 134.5	ACD 126.1	SMC 121.7	TWR 120.5	APP 118.2	Bearings are Magnetic Elevations in FEET AMSL
---------------------	--------------	--------------	--------------	--------------	--

NOT TO SCALE



SEDAN TWO DEPARTURE

RWY 05

- GRAD 4.4% to 900FT thence 3.3%
- Track 042° to MOPRI
Cross MOPRI AT or ABV 5000FT
- Track 043° to GULLY
- Turn RIGHT track 056° to SEDAN,
 thence as cleared

RWY 23

- GRAD 4.7% to 3300FT thence 3.3%
- Track 222° to COLPY
Cross COLPY AT or ABV 2500FT
- Turn LEFT track 134° to SULLY
Cross SULLY AT or ABV 5000FT
- Turn LEFT track 077° to MORPH
Cross MORPH AT or ABV 6000FT
- Track 077° to CLARY,
- Turn LEFT track 039° to URADA,
Cross URADA AT or ABV FL120
- Track 039° to SEDAN,
 thence as cleared