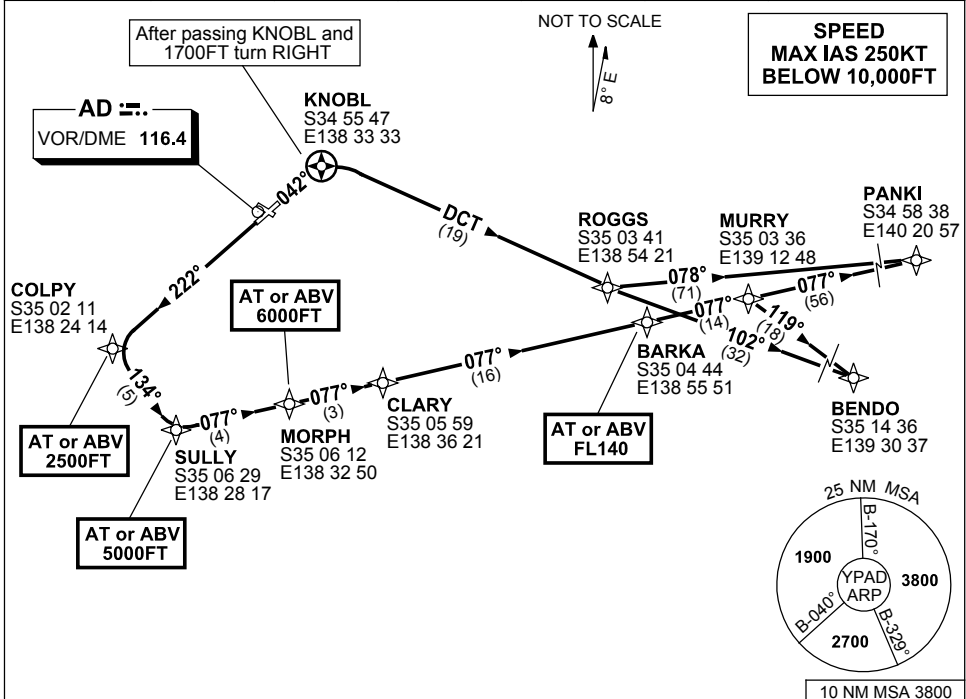


**STANDARD INSTRUMENT DEPARTURES (SID)
RWYS EAST (JET) (RNAV)
ADELAIDE, SA (YPAD)**

1 MAR 2018

ATIS 116.4 134.5	ACD 126.1	SMC 121.7	TWR 120.5	APP 118.2	Bearings are Magnetic Elevations in FEET AMSL
---------------------	--------------	--------------	--------------	--------------	--



**PANKI THREE DEPARTURE
BENDO TWO DEPARTURE**

RWY 05

- GRAD 5.7% to 3300FT then 3.3%
- Track 042°
- After passing KNOBL AND 1700FT turn RIGHT
- Track DCT to ROGGS

For PANKI

- From ROGGS turn LEFT track 078° to PANKI, thence as cleared

For BENDO

- From ROGGS turn as required, track 102° to BENDO, thence as cleared

RWY 23

- GRAD 4.7% to 3300FT then 3.3%
- Track 222° to COLPY
- **Cross** COLPY AT or ABV 2500FT
- Turn LEFT, track 134° to SULLY
- **Cross** SULLY AT or ABV 5000FT
- Turn LEFT, track 077° to MORPH
- **Cross** MORPH AT or ABV 6000FT
- Track 077° to CLARY
- Track 077° to BARKA
- **Cross** BARKA AT or ABV FL140
- Track 077° to MURRY

For PANKI

- From MURRY track 077° to PANKI, thence as cleared

For BENDO

- From MURRY turn RIGHT track 119° to BENDO, thence as cleared

Changes: MSA.

PADDP02-154