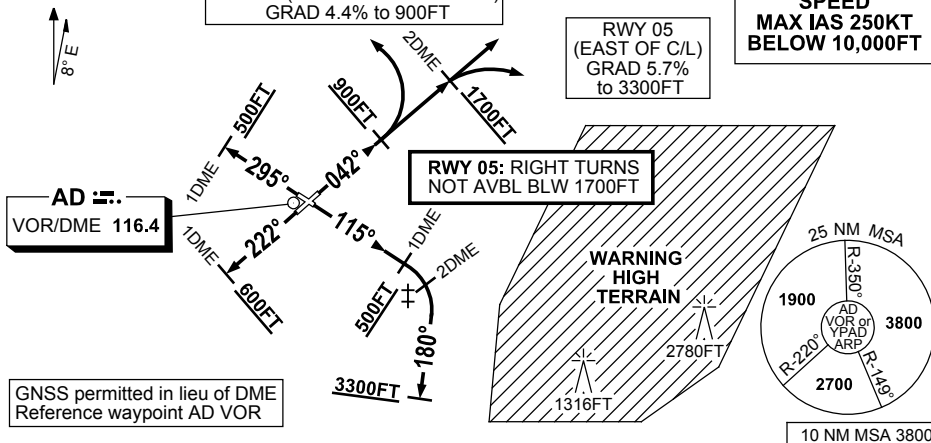


**STANDARD INSTRUMENT DEPARTURES (SID)
ADELAIDE THREE DEPARTURE (RADAR) (ALL RUNWAYS)
ADELAIDE, SA (YPAD)**

1 MAR 2018

ATIS 116.4 134.5	ACD 126.1	SMC 121.7	TWR 120.5	APP (SE) 118.2	APP (NW) 124.2	Bearings are Magnetic Elevations in FEET AMSL
---------------------	--------------	--------------	--------------	-------------------	-------------------	--

NOT TO SCALE



ADELAIDE THREE DEPARTURE (RADAR)

- NOTE:**
- FOR RWY 05 DEPS, ACFT WITH FLT PLAN TRACKS IN THE SECTOR 042° THROUGH WEST TO 219° CAN EXPECT A LEFT TURN.
 - JETS DEPARTING FROM RWY 23/30 FOR TRACKS TO THE EAST OF ADELAIDE CAN EXPECT TO BE AT OR ABV 5000FT BY CROSSING R-185°AD OR THE COAST EASTBOUND
 - WHEN AD DME NOT AVBL, ON PILOT REQ APP WILL ADVISE PASSING DME DIST BASED ON RADAR OBS.

RWY 05 (DEPS EAST OF RWY C/L)

- GRAD 5.7% to 3300FT thence 3.3%
- Track 042°
- At or ABV 1700FT AND after passing 2 DME turn to assigned heading
RIGHT TURNS BLW 1700FT NOT AVBL

RWY 05 (DEPS ON & WEST OF RWY C/L)

- GRAD 4.4% to 900FT thence 3.3%
- Track 042°
- At or ABV 900FT turn LEFT to assigned heading (HEADING 042° ALSO AVBL)

RWY 12 (MAX IAS 175KT until tracking 180°) ‡

- GRAD 4.7% to 1500FT thence 3.3%
- Track 115°
- ‡ AT or ABV 500FT AND between 1 DME and 2 DME turn RIGHT track 180°
- At or ABV 3300FT turn to assigned heading

RWY 23

- GRAD 4.7% to 3300FT thence 3.3%
- Track 222°
- At or ABV 600FT AND after passing 1 DME SW turn to assigned heading

RWY 30

- GRAD 4.7% to 3300FT thence 3.3%
- Track 295°
- At or ABV 500FT AND after passing 1 DME NW turn to assigned heading

**COMMUNICATIONS FAILURE: PROCEDURE IN IMC
IF ABLE CTC AD APP 08-8238-7992**

On recognition of communication failure

- Squawk 7600
- Maintain last assigned vector for two minutes, and
- CLIMB IF NECESSARY TO MINIMUM SAFE ALTITUDE, to maintain terrain clearance, then
- proceed in accordance with the latest ATC route clearance acknowledged.

Changes: MSA.

PADDP01-154