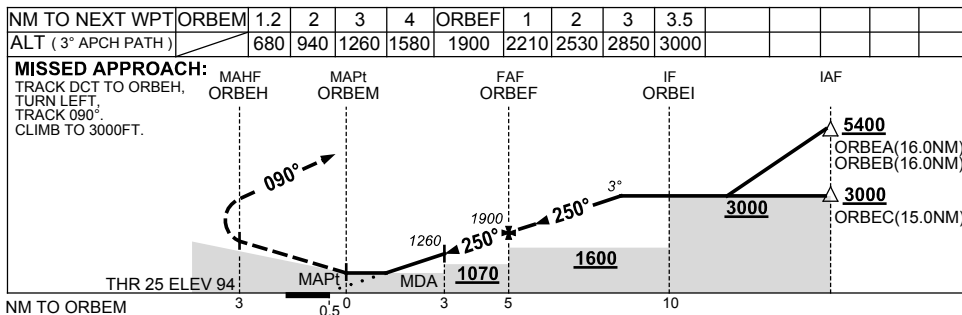
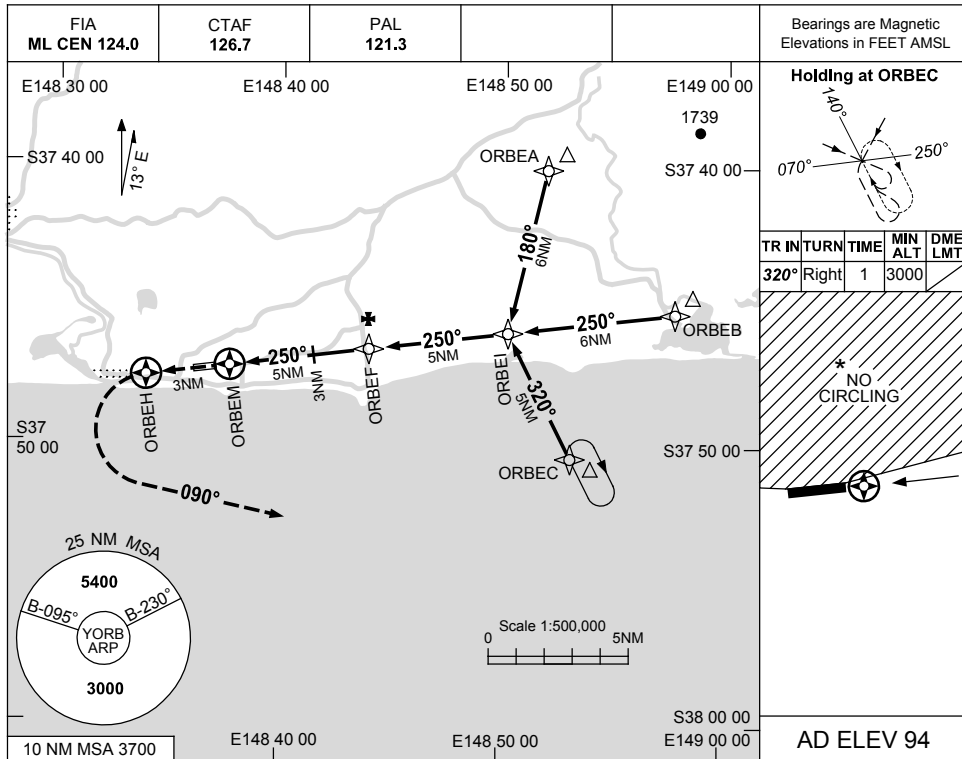


USE QNH

RNAV_(GNSS) RWY 25
ORBOST, VIC (YORB)

28 FEB 2019



NOTES

CATEGORY	A	B	C	D
LNAV	680 (586-3.3)			NOT APPLICABLE
CIRCLING *	690 (596-2.4)		830 (736-4.0)	
ALTERNATE	(1096-4.4)		(1236-6.0)	

1. MAX IAS:
INITIAL : 210KT.
- * 2. NO CIRCLING NORTH
OF RWY 07/25.

Changes: PROFILE, Editorial.

ORBGN02-158