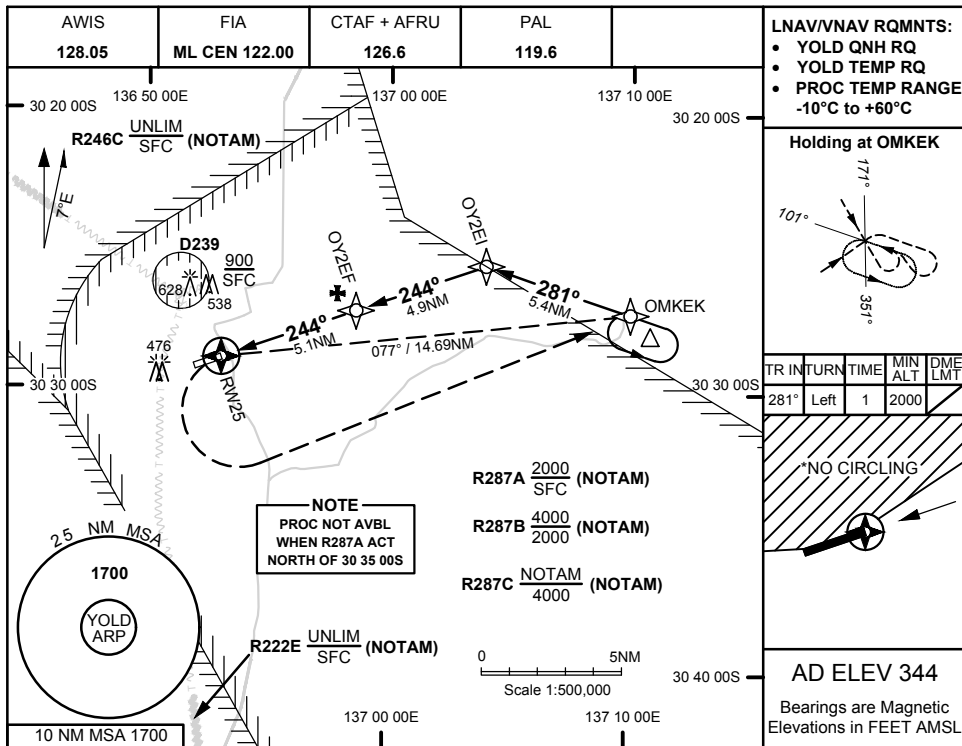
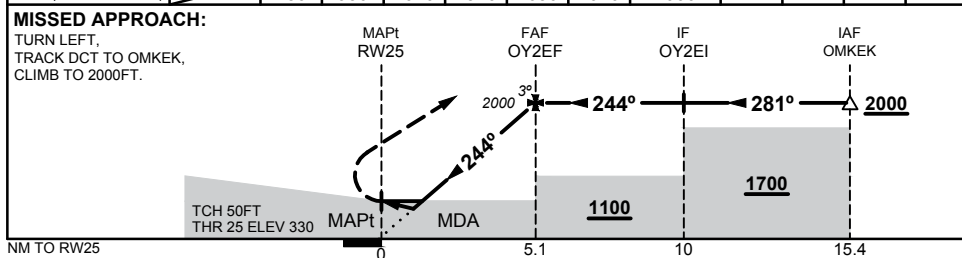


9 SEP 2021



NM TO NEXT WPT	RW25	1.2	1.7	2	3	4	5	OY2EF			
ALT (3° APCH PATH)		750	930	1020	1340	1650	1970	2000			



NOTES

1. MAX IAS:
MAP TURN : 180KTS
- *2. NO CIRCLING NORTH OF RWY 07/25

CATEGORY	A	B	C	D
LNAV/VNAV	750 (420 - 2.3)			NOT APPLICABLE
LNAV	930 (600 - 3.4)			
CIRCLING*	980 (636 - 2.4)		1080 (736 - 4.0)	
ALTERNATE	(1136 - 4.4)		(1236 - 6.0)	

Changes: FROM SUP H46/21

OLDGN02-168

