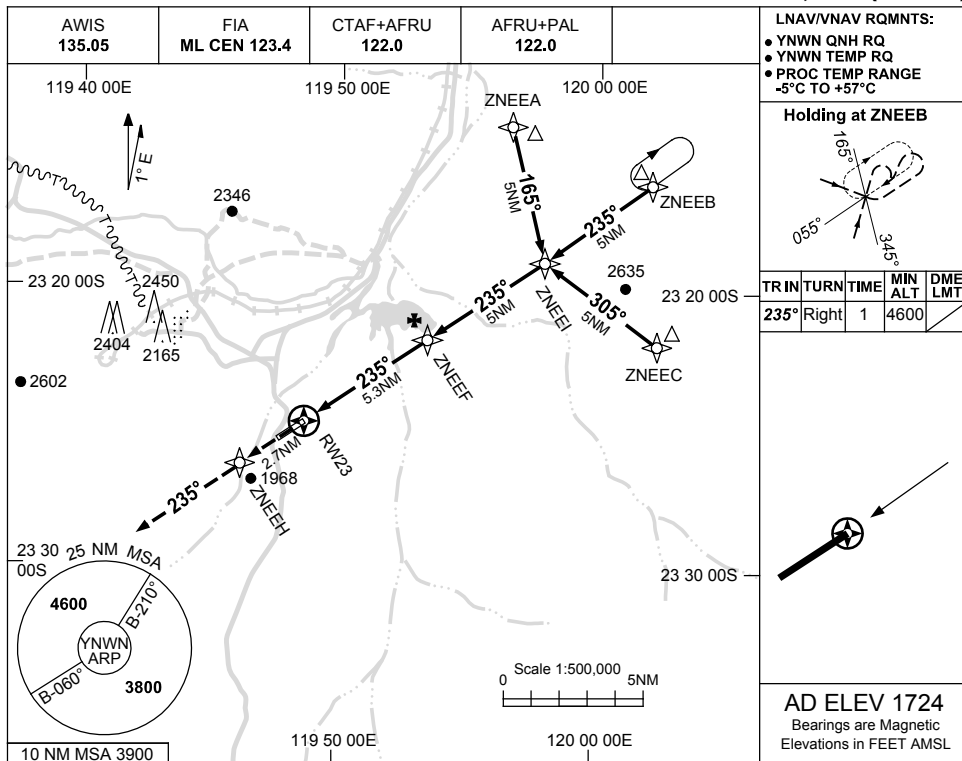


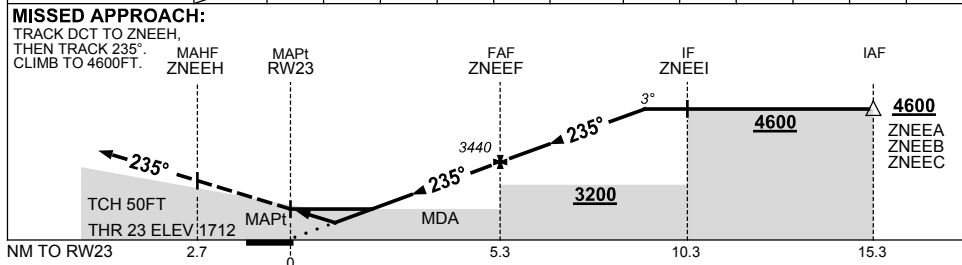
USE QNH

RNAV-Z (GNSS) RWY 23
NEWMAN, WA (YNWN)

13 AUG 2020



NM TO NEXT WPT	RW23	1	1.6	2	3	4	ZNEEF	1	2	3	3.6		
ALT (3° APCH PATH)		2070	2260	2400	2720	3040	3440	3760	4080	4390	4600		



NOTES

CATEGORY	A	B	C	D
LNAV/VNAV		2070 (358-2.0)		
LNAV		2260 (548-3.1)		
CIRCLING	2500 (776-2.4)		2730 (1006-4.0)	2860 (1136-5.0)
ALTERNATE	(1276-4.4)		(1506-6.0)	(1636-7.0)

1. MAX IAS:
 INITIAL : 230KT.

Changes: FROM SUP H42/20.

NWNGN02-164