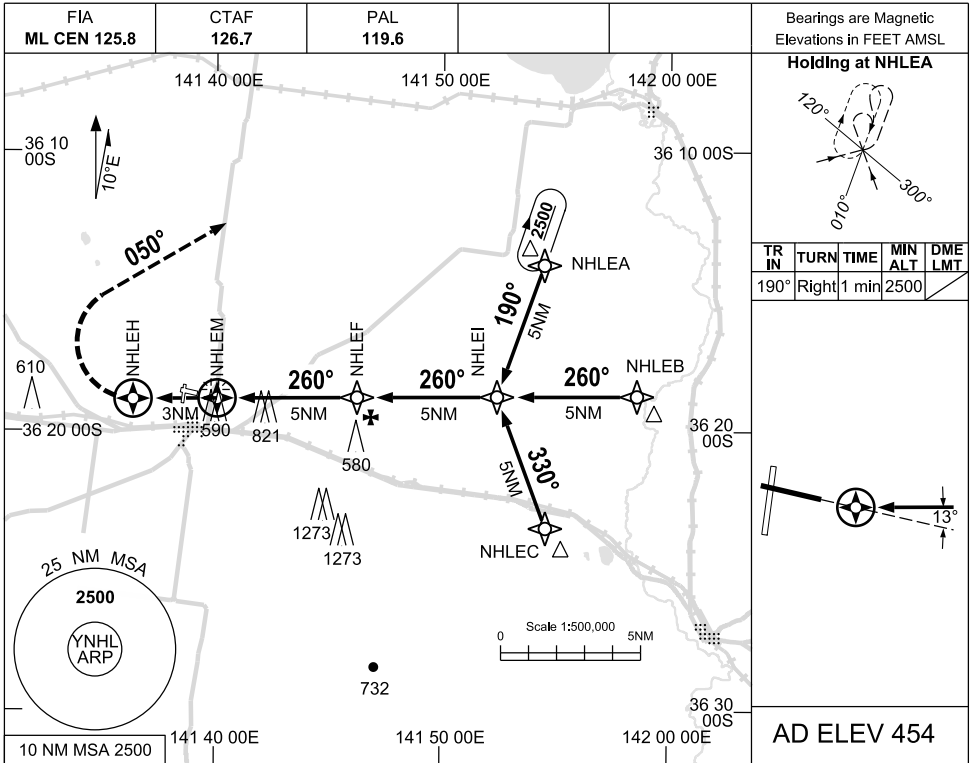


USE QNH

RNAV-Z (GNSS) RWY 27
NHILL, VIC (YNHL)

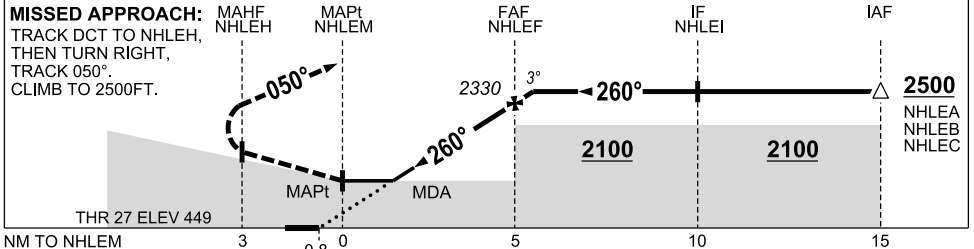
7 NOV 2019



TR IN	TURN	TIME	MIN ALT	DME LMT
190°	Right	1 min	2500	

AD ELEV 454

NM TO NEXT WPT	NHLEM	1	2	3	4	NHLEF	0.5			
ALT (3° APCH PATH)		1070	1380	1700	2010	2330	2500			



NOTES

1. MAX IAS: INITIAL: 210 KTS
2. AWIS (PHONE) 03 8470 3218
- ‡ 3. TAF NAVBL. REFER AIP ENR 1.5 PARA 5.3.4

CATEGORY	A	B	C	D
LNAV‡	1070 (616-3.5)			NOT APPLICABLE
CIRCLING ‡	1220 (766-2.4)		1320 (866-4.0)	
ALTERNATE ‡	(1266-4.4)		(1366-6.0)	

Changes: FM SUP H87/19

NHLGN02-161

