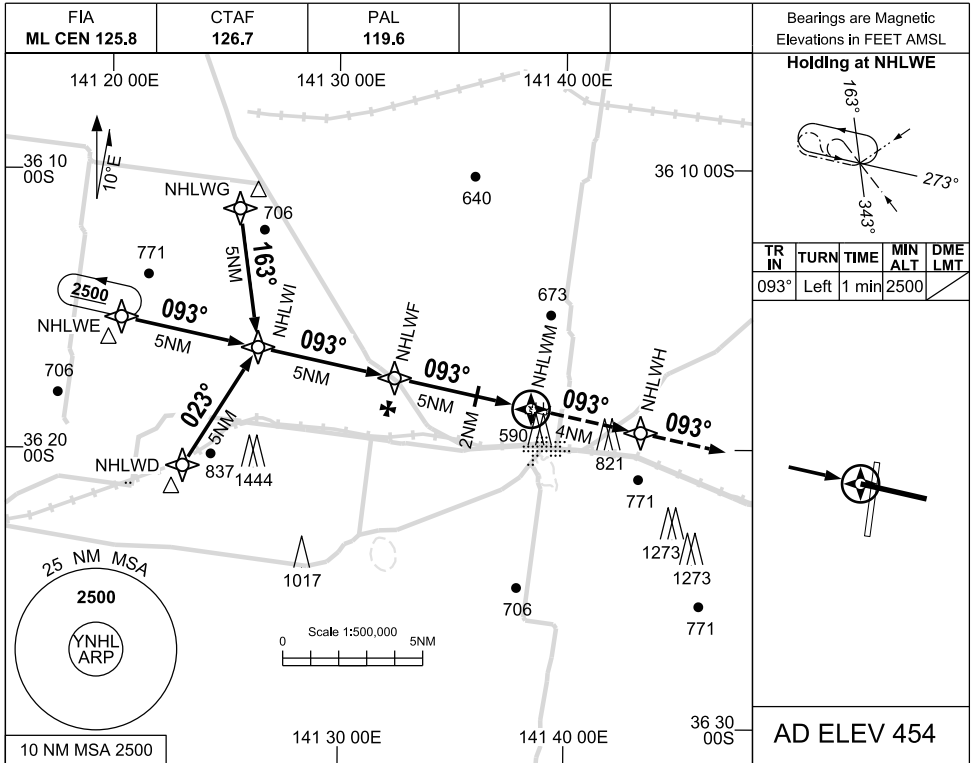


USE QNH

RNAV-Z (GNSS) RWY 09  
**NHILL, VIC (YNHL)**

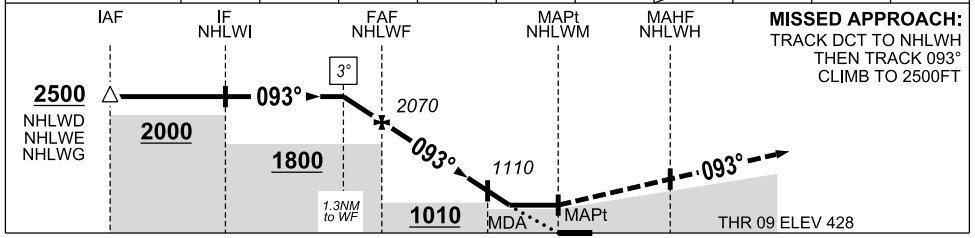
7 NOV 2019



TR IN	TURN	TIME	MIN ALT	DME LMT
093°	Left	1 min	2500	

AD ELEV 454

NM TO NEXT WPT	1.3	NHLWF	4	3	2	1.5	NHLWM		
ALT (3° APCH PATH)	2500	2070	1750	1430	1110	940			



Gnd Speed (KTS)	60	70	80	90	100	120	140	160
Desc Rate (fpm) (3°)	320	370	420	480	530	640	740	850

CATEGORY	A	B	C	D
LNAV‡	940 (512-2.9)			NOT APPLICABLE
CIRCLING ‡	1220 (766-2.4)		1320 (866-4.0)	
ALTERNATE ‡	(1266-4.4)		(1366-6.0)	

**MISSED APPROACH:**  
 TRACK DCT TO NHLWH  
 THEN TRACK 093°  
 CLIMB TO 2500FT

- NOTES**
- MAX IAS:  
INITIAL: 210 KTS
  - AWIS (PHONE)  
03 8470 3218
  - ‡3. TAF NAVBL.  
REFER AIP ENR  
1.5 PARA 5.3.4

Changes: FM SUP H87/19

NHLGN01-161

