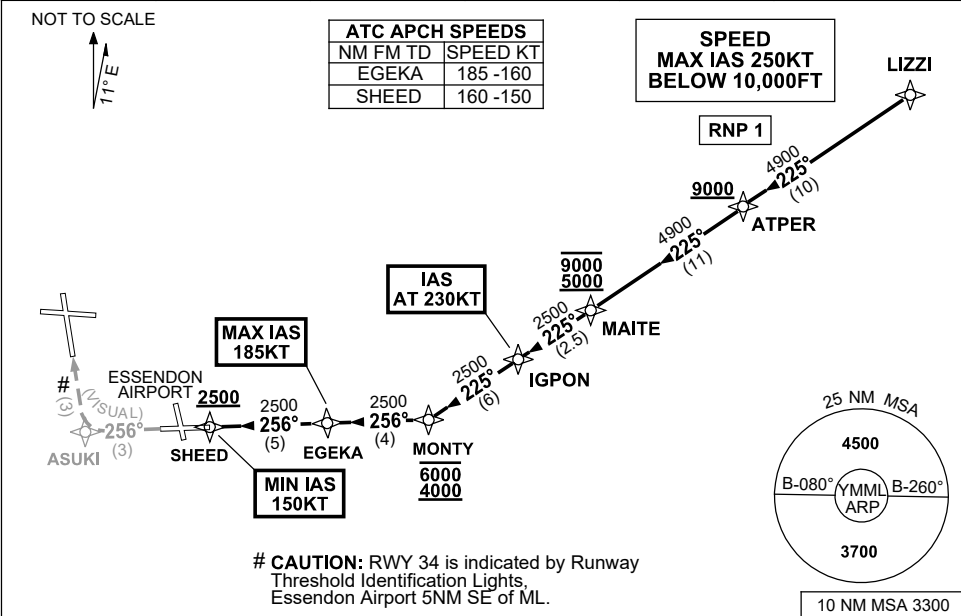


STANDARD INSTRUMENT ARRIVAL (STAR)
LIZZI NINE VICTOR ARRIVAL (RNAV)
MELBOURNE, VIC (YMML)

23 MAR 2023

| | | | | | |
|---------------------|--------------|--------------|--------------|--|--|
| ATIS 114.1 118.0 | APP 132.0 | TWR 120.5 | SMC 121.7 | | Bearings are Magnetic Elevations in FEET AMSL |
|---------------------|--------------|--------------|--------------|--|--|



ARRIVAL: LIZZI NINE VICTOR

RWY 34 :

- From LIZZI track 225° to ATPER
Cross ATPER AT or ABV 9000ft
- Track 225° to MAITE
Cross MAITE BTN 5000ft and 9000ft
- Track 225° to IGPON
IAS AT 230KT from IGPON
- Track 225° to MONTY
Cross MONTY BTN 4000ft and 6000ft
- Turn RIGHT, track 256° to EGEKA
MAX IAS 185KT from EGEKA
- Track 256° to SHEED
Cross SHEED AT or ABV 2500ft
MIN IAS 150KT from SHEED
- Track 256° VISUAL to ASUKI
- Turn RIGHT for VISUAL intercept of final RWY 34

COMMUNICATIONS FAILURE: PROCEDURE IN IMC

- Squawk 7600, comply with vertical navigation requirements, but not below MSA.
- Track via the latest STAR clearance to the nominated runway, then fly the most suitable approach in accordance with ERSA EMERG Section 1.5.