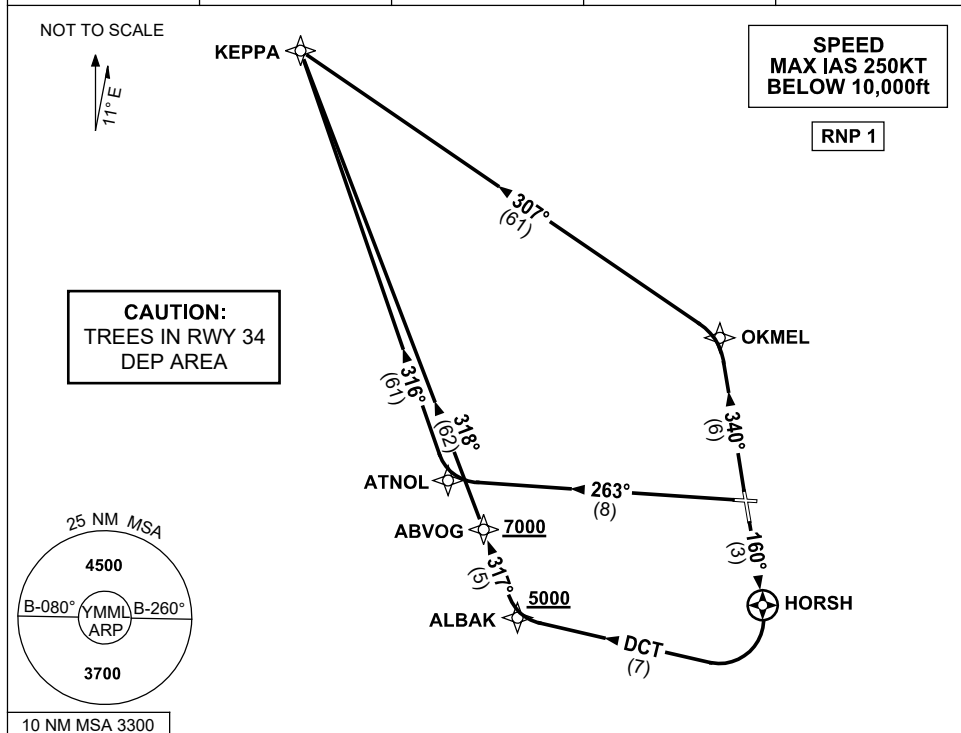


STANDARD INSTRUMENT DEPARTURES (SID)
KEPPA TWO (JET) (RNAV)
MELBOURNE, VIC (YMML)

24 MAR 2022

| | | | | |
|---------------------|--------------|--------------|--------------|--------------|
| ATIS 114.1 118.0 | ACD 127.2 | SMC 121.7 | TWR 120.5 | DEP 118.9 |
|---------------------|--------------|--------------|--------------|--------------|



KEPPA TWO DEPARTURE

RWY 16

- GRAD 3.3%
- Track 160° to HORSH
- At HORSH turn RIGHT
- Track DCT to ALBAK
- Cross ALBAK AT or ABV 5000ft (RQ GRAD TO ALBAK 8.5%)
- Turn RIGHT, track 317° to ABVOG
- Cross ABVOG AT or ABV 7000ft (RQ GRAD TO ABVOG 7.4%)
- Turn RIGHT, track 318° to KEPPA, thence as cleared

RWY 27

- GRAD 3.3%
- Track 263° to ATNOL
- Turn RIGHT, track 316° to KEPPA, thence as cleared

RWY 34

- GRAD 3.5% to 1200ft then 3.3%
- Track 340° to OKMEL
- Turn LEFT, track 307° to KEPPA, thence as cleared

Changes: CAUTION NOTE, Editorial.

MMLDP04-170