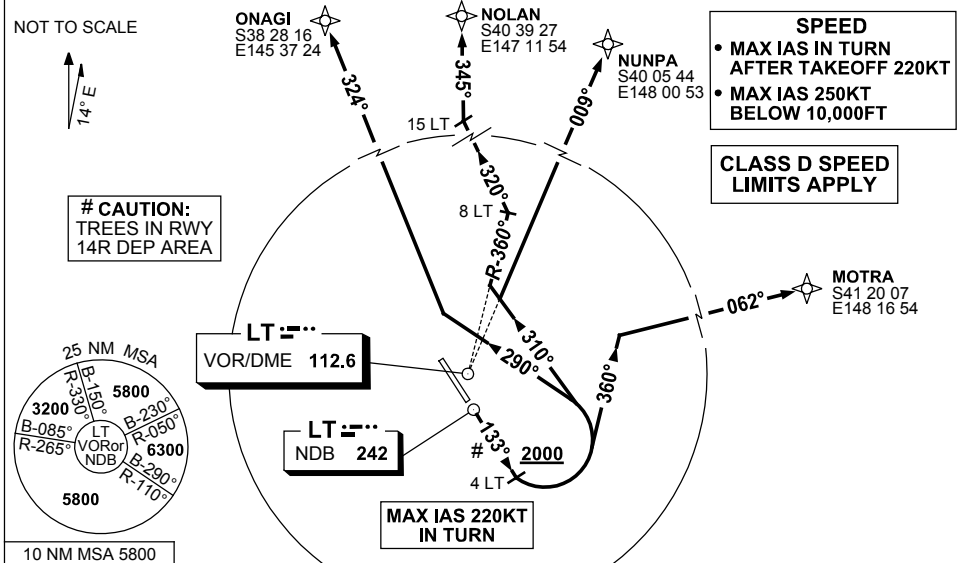


**STANDARD INSTRUMENT DEPARTURES (SID)
RWY 14R NORTH BRAVO
LAUNCESTON TAS (YMLT)**

9 NOV 2017

ATIS 112.6 (TWR HR) 134.75 (H24)	AWIS (AH) 112.6	TWR 118.7	FIA (AH) ML CEN 126.5	CTAF+AFRU (AH) 118.7	AFRU+PAL (AH) 118.7	Bearings are Magnetic Elevations in FEET AMSL
--	--------------------	--------------	--------------------------	-------------------------	------------------------	--



NUNPA	ONE	BRAVO	DEPARTURE
NOLAN	FIVE	BRAVO	DEPARTURE
MOTRA	ONE	BRAVO	DEPARTURE
ONAGI	ONE	BRAVO	DEPARTURE

RWY 14R

- Track 133°
- (MAX IAS 220KT IN TURN)**

FOR MOTRA

- GRAD 4.4% TO 6000FT THEN 3.3%
- At the LATER of 2000FT and 4 DME LT, turn LEFT, track 360°
- Intercept route as cleared

FOR NUNPA

- GRAD 3.7% TO 3300FT THEN 3.3%
- At the LATER of 2000FT and 4 DME LT, turn LEFT, track 310°
- Intercept route as cleared

FOR NOLAN

- GRAD 3.7% TO 3300FT THEN 3.3%
- At the LATER of 2000FT and 4 DME LT, turn LEFT, track 310°
- Intercept LT R-360°
- Passing 8 DME, turn LEFT, track 320°
- Intercept route as cleared by 15 DME LT

FOR ONAGI

- GRAD 3.7% TO 3300FT THEN 3.3%
- At the LATER of 2000FT and 4 DME LT, turn LEFT, track 290°
- Intercept route as cleared

Changes: SPEED REST.

MLTDP05-153

