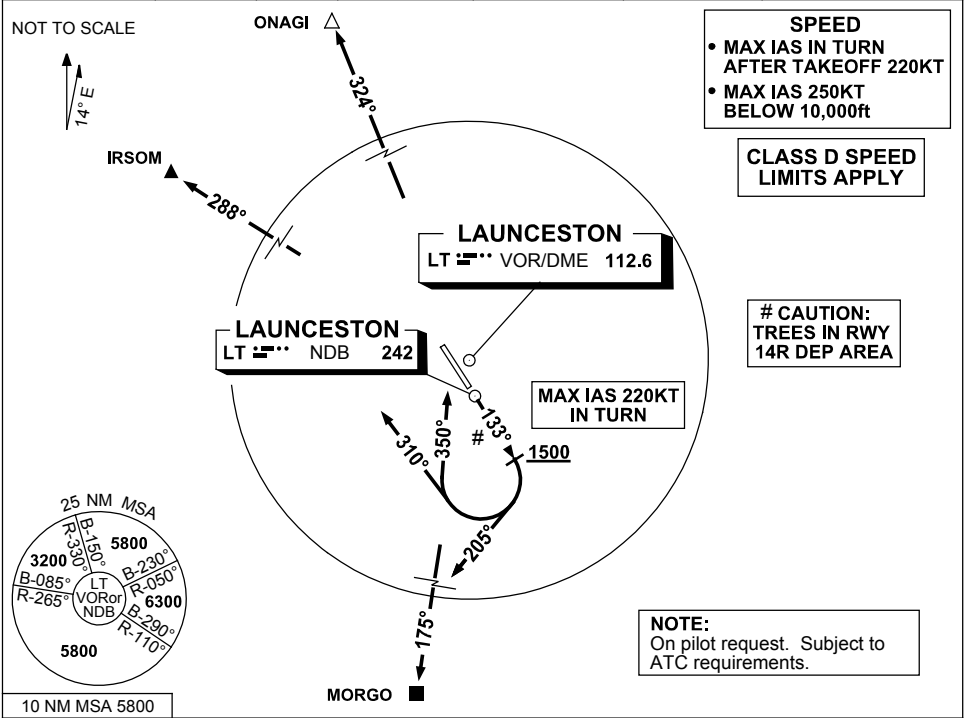


**STANDARD INSTRUMENT DEPARTURES (SID)  
RWY 14R CHARLIE (NON-JET)  
LAUNCESTON TAS (YMLT)**

**30 NOV 2023**

ATIS 112.6 (TWR HR) 134.75 (H24)	AWIS (AH) 112.6	TWR 118.7	LT APP/FIA (AH) ML CEN 123.8	CTAF+AFRU (AH) 118.7	AFRU+PAL (AH) 118.7	Bearings are Magnetic Elevations in FEET AMSL
--	--------------------	--------------	---------------------------------	-------------------------	------------------------	--



**SPEED**

- MAX IAS IN TURN AFTER TAKEOFF 220KT
- MAX IAS 250KT BELOW 10,000ft

**CLASS D SPEED LIMITS APPLY**

**# CAUTION: TREES IN RWY 14R DEP AREA**

**MAX IAS 220KT IN TURN**

**NOTE:**  
On pilot request. Subject to ATC requirements.

10 NM MSA 5800

**IRSOM TWO CHARLIE DEPARTURE      MORG0 TWO CHARLIE DEPARTURE**  
**ONAGI TWO CHARLIE DEPARTURE**

**RWY 14R**

- Track 133°
- (MAX IAS 220KT IN TURN)

**FOR IRSOM**

- GRAD 3.3%
- AT or ABV 1500ft turn RIGHT track 310°
- Intercept route as cleared

**FOR ONAGI**

- GRAD 3.3%
- AT or ABV 1500ft turn RIGHT track 350°
- Intercept route as cleared by 5 DME North of LT

**FOR MORG0**

- GRAD 4% TO 2100ft then 3.3%
- AT OR ABV 1500ft turn RIGHT track 205°
- Track 205°
- Intercept route as cleared

Changes: FROM SUP H40/23.

MLTDP03-177