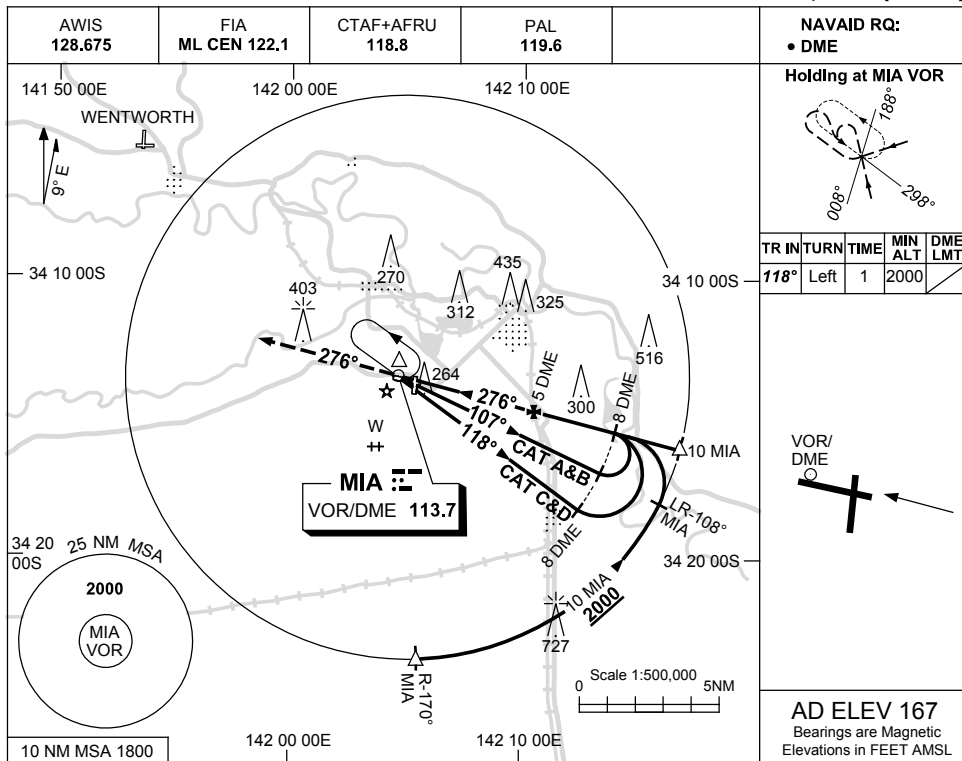


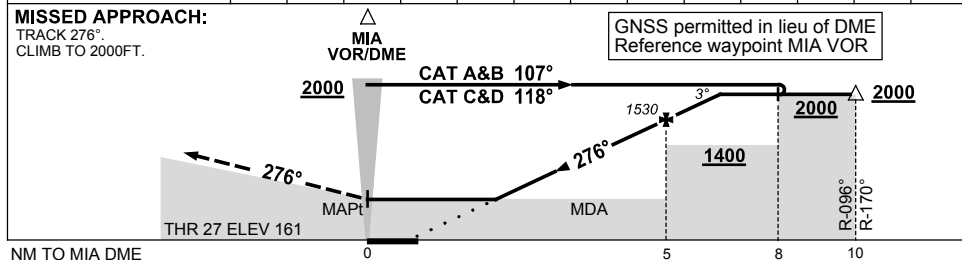
USE QNH

VOR-Z RWY 27  
MILDURA, VIC (YMIA)

13 AUG 2020



DIST TO MIA DME	2.3	3	4	5	6	6.5							
ALT (3° APCH PATH)	660	900	1220	1530	1850	2000							



**NOTES**

CATEGORY	A	B	C	D
S-I VOR/DME	660 (493-2.8)			
CIRCLING	840 (673-2.4)	900 (733-4.0)	980 (813-5.0)	
ALTERNATE	(1173-4.4)	(1233-6.0)	(1313-7.0)	

1. MAX IAS:  
INITIAL : 210KT.

Changes: THR ELEV, MINIMA.

MIAVO03-164