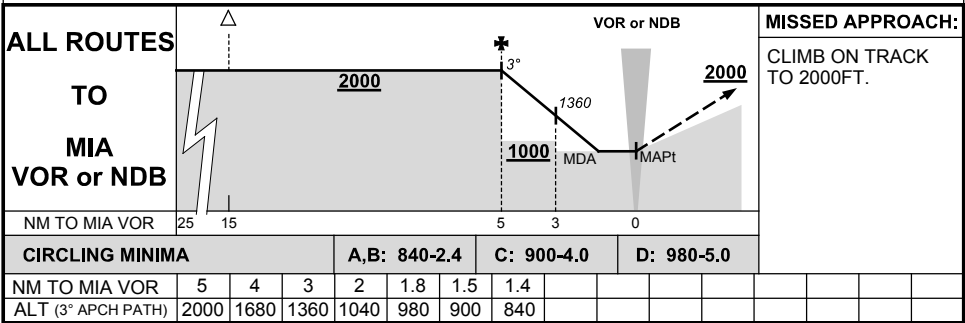
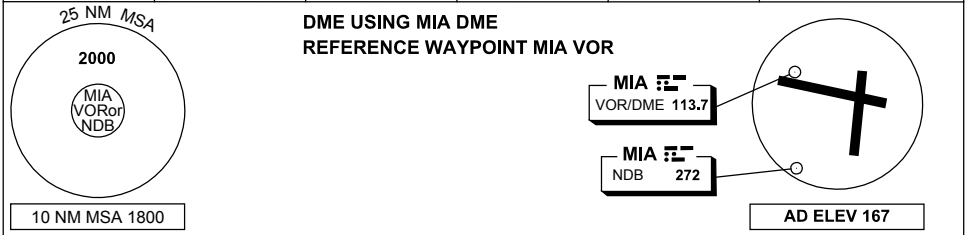


## DME or GNSS ARRIVAL PROCEDURES MILDURA, VIC (YMIA)

23 MAY 2019

AWIS 128.675	FIA ML CEN 122.1	CTAF+AFRU 118.8	PAL 119.6		Bearings are Magnetic Elevations in FEET AMSL
-----------------	---------------------	--------------------	--------------	--	--



Changes: Editorial.

