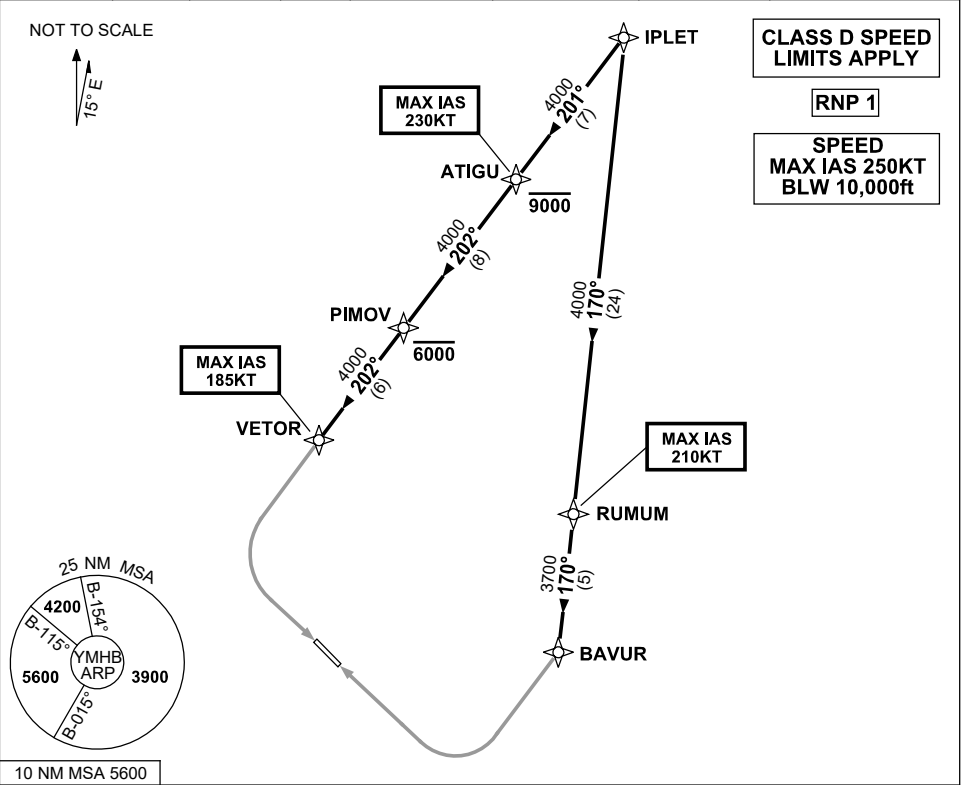


STANDARD INSTRUMENT ARRIVAL (STAR)
IPLET SIX WHISKEY ARRIVAL (RNAV)
HOBART, TAS (YMHB)

15 JUN 2023

ATIS 112.7 128.45	AWIS 122.375	SMC/ACD 121.7	TWR 118.1	HB APP/FIA (AH) ML CEN 125.55	CTAF+AFRU (AH) 118.1	AFRU+PAL (AH) 118.1	Bearings are Magnetic Elevations in FEET AMSL
----------------------	-----------------	------------------	--------------	----------------------------------	-------------------------	------------------------	--



ARRIVAL: IPLET SIX WHISKEY

RWY 12:

- From IPLET, track 201° to ATIGU
Cross ATIGU AT or BLW 9000FT
MAX IAS 230KT from ATIGU
- Track 202° to PIMOV
Cross PIMOV AT or BLW 6000FT
- Track 202° to VETOR
MAX IAS 185KT from VETOR
- Turn LEFT, track via
RNP W RWY 12 (AR)

RWY 30:

- From IPLET, track 170° to RUMUM
MAX IAS 210KT from RUMUM
- Track 170° to BAVUR
- Turn RIGHT, track via
RNP W RWY 30 (AR)

COMMUNICATIONS FAILURE: PROCEDURE IN IMC

- Squawk 7600, comply with vertical navigation requirements, but not below MSA.
- Track via the latest STAR clearance to the nominated runway, then fly the most suitable approach in accordance with ERS A EMERG Section 1.5.

Changes: Editorial.

MHBSR05-175