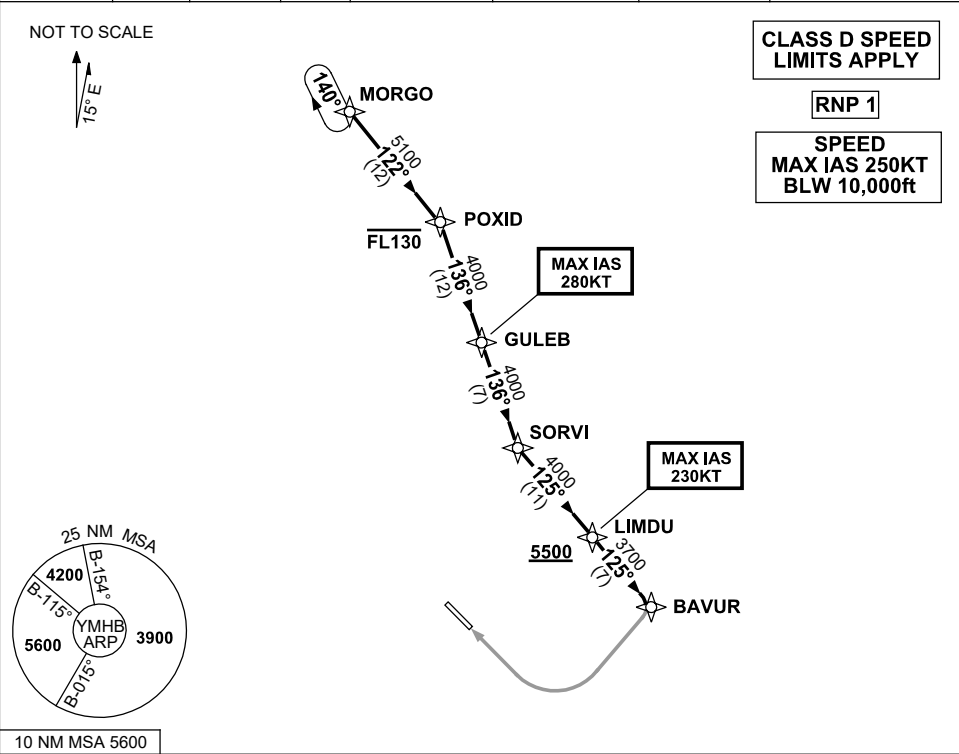


STANDARD INSTRUMENT ARRIVAL (STAR)
MORG0 TWO WHISKEY ARRIVAL (RNAV)
HOBART, TAS (YMHB)

15 JUN 2023

ATIS	AWIS	SMC/ACD	TWR	HB APP/FIA (AH)	CTAF+AFRU (AH)	AFRU+PAL (AH)	Bearings are Magnetic Elevations in FEET AMSL
112.7 128.45	122.375	121.7	118.1	ML CEN 125.55	118.1	118.1	



ARRIVAL: MORG0 TWO WHISKEY

RWY 30:

- From MORG0 track 122° to POXID
Cross POXID AT or BLW FL130
- Turn RIGHT, track 136° to GULEB
MAX IAS 280KT from GULEB
- Track 136° to SORVI
- Turn LEFT, track 125° to LIMDU
Cross LIMDU AT or ABV 5500FT
MAX IAS 230KT from LIMDU
- Track 125° to BAVUR
- Turn RIGHT, track via
RNP W RWY 30 (AR)

COMMUNICATIONS FAILURE: PROCEDURE IN IMC

- Squawk 7600, comply with vertical navigation requirements, but not below MSA.
- Track via the latest STAR clearance to the nominated runway, then fly the most suitable approach in accordance with ERSA EMERG Section 1.5.

Changes: Editorial.

MHBSR03-175