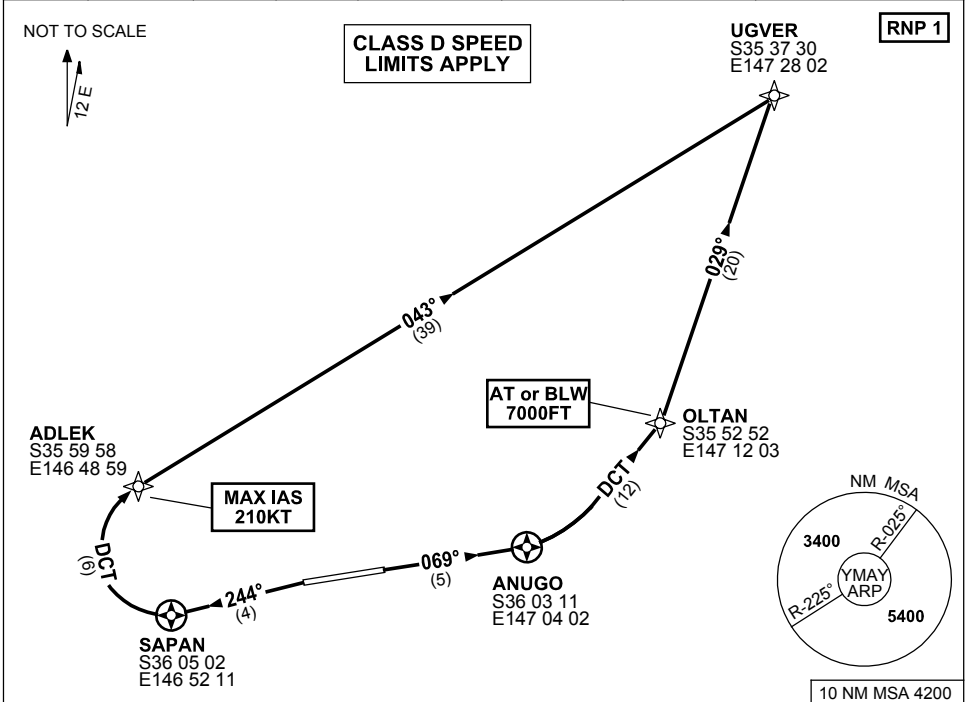


**STANDARD INSTRUMENT DEPARTURES (SID)
UGVER ONE DEPARTURE (RNAV)
ALBURY, NSW (YMAY)**

9 NOV 2017

AWIS 134.525	ATIS 115.6 133.85	TWR 123.25	SMC 121.8	CTAF+AFRU (AH) 123.25	FIA (AH) ML CEN 125.2	AFRU+PAL (AH) 123.25	Bearings are Magnetic Elevations in FEET AMSL
-----------------	----------------------	---------------	--------------	--------------------------	--------------------------	-------------------------	--



UGVER ONE DEPARTURE

RWY 07

- GRAD 4.8% TO 1700FT THENCE 3.3%
- Track 069° to ANUGO
- Turn LEFT, track DCT to OLTAN
- **Cross** OLTAN AT or BLW 7000FT
- Track 029° to UGVER

RWY 25

- GRAD 4.8% TO 1900FT THENCE 3.3% (5.0% TO 2500FT)
- NOT BEFORE DER turn LEFT, track 244° to SAPAN
- Turn RIGHT, track DCT to ADLEK
- **MAX IAS 210KT** to ADLEK
- Track 043° to UGVER

Changes: SPEED REST.

MAYDP02-153