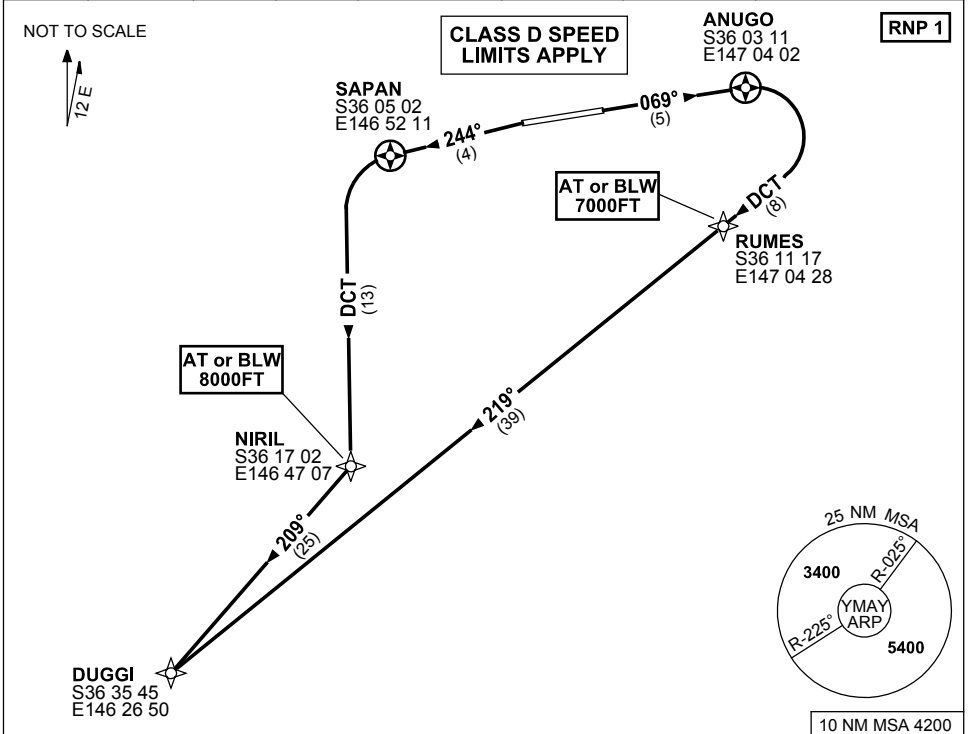


**STANDARD INSTRUMENT DEPARTURES (SID)  
DUGGI ONE DEPARTURE (RNAV)  
ALBURY, NSW (YMAY)**

**9 NOV 2017**

AWIS 134.525	ATIS 115.6 133.85	TWR 123.25	SMC 121.8	CTAF+AFRU (AH) 123.25	FIA (AH) ML CEN 125.2	AFRU+PAL (AH) 123.25	Bearings are Magnetic Elevations in FEET AMSL
-----------------	----------------------	---------------	--------------	--------------------------	--------------------------	-------------------------	--



**DUGGI ONE DEPARTURE**

**RWY 07**

- GRAD 5.6% TO 2600FT THENCE 3.3%
- Track 069° to ANUGO
- Turn RIGHT, track DCT to RUMES  
**Cross** RUMES AT or BLW 7000FT
- Track 219° to DUGGI

**RWY 25**

- GRAD 4.8% TO 1400FT THENCE 3.3% (5.0% TO 2500FT)
- NOT BEFORE DER turn LEFT, track 244° to SAPAN
- Turn LEFT, track DCT to NIRIL  
**Cross** NIRIL AT or BLW 8000FT
- Turn RIGHT, track 209° to DUGGI

Changes: SPEED REST.

MAYDP01-153