

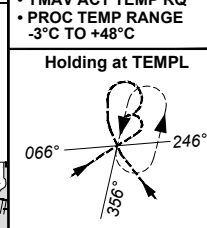
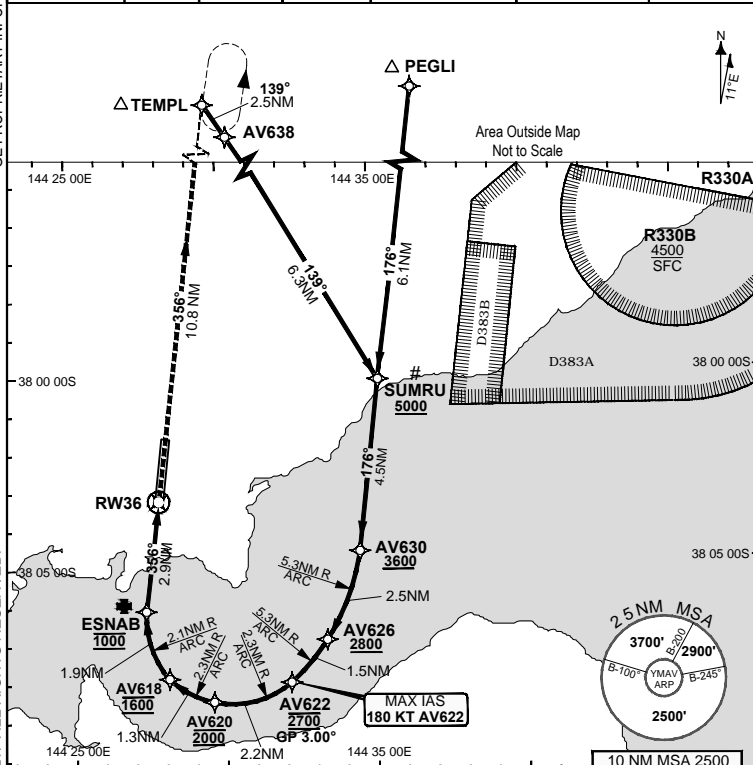
**FOR CASA APPROVED  
OPERATORS ONLY  
USE QNH**

RNP U RWY 36 (AR)  
AVALON, VIC (YMAV)

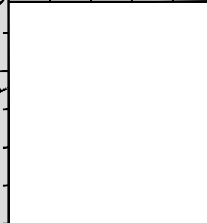
**9 SEP 2021**

GE PROPRIETARY INFORMATION

ATIS (AWIS AH) <b>118.2 116.1</b>	AV APP <b>133.55</b>	TWR <b>120.1</b>	FIA (AH) ML CEN <b>135.7</b>	CTAF+AFRU (AH) <b>120.1</b>	AFRU+PAL (AH) <b>120.1</b>	RNP U 36 THR ELEV 35	RNP AR APCH • RF RQ • YMAV ACT QNH RQ • YMAV ACT TEMP RQ • PROC TEMP RANGE -3°C TO +48°C
---	-------------------------	---------------------	------------------------------------	--------------------------------	-------------------------------	-------------------------	---

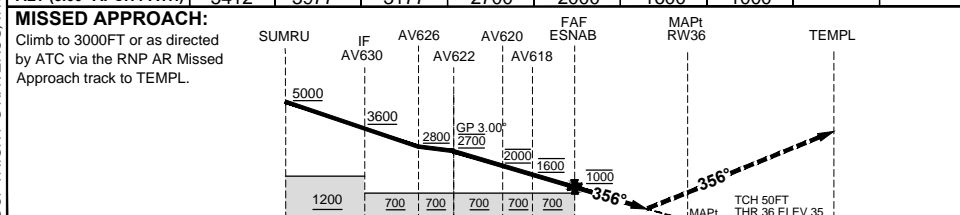


TR	TURN	TIME	MIN ALT	DME LMT
176°	Left	1'	3000	15



**AD ELEV 35**  
Bearings are Magnetic  
Elevations in FEET AMSL

ALT (3.00° APCH PATH)	SUMRU	AV630	AV626	AV622	AV620	AV618	ESNAB
	5412	3977	3177	2700	2000	1600	1000



**NOTES**

- PAPI not coincident with VPA.
- RNP 0.3 Required from AV638 TO ESNAB.
- RNP 0.3 Required from PEGLI TO ESNAB.
- Climb gradient of 4.5% to 3000FT required to reach TEMPL.
- HLDG pattern not contained within CTA.
- Latest Intercept Point (LIP)

CATEGORY	A	B	C	D
RNP (0.30)			DA(H) <b>428</b> (393 - 2.2)	DA(H) <b>428</b> (393 - 2.2)
RNP (0.15)			DA(H) <b>362</b> (327 - 1.8)	DA(H) <b>362</b> (327 - 1.8)
CIRCLING	N/A		NOT AUTHORISED	NOT AUTHORISED
ALTERNATE				

Changes: Editorial, Proc Name, Nav Spec, Missed APCH & Temp notes.

MAVGN03-168

**DO NOT USE FOR NAVIGATION**

Prepared by GE Aviation - ICAO Doc 9905 Compliant

