

**STANDARD INSTRUMENT DEPARTURES (SID)
JUSTY TWO DEPARTURE (RNAV)
AVALON, VIC (YMAV)**

9 NOV 2017

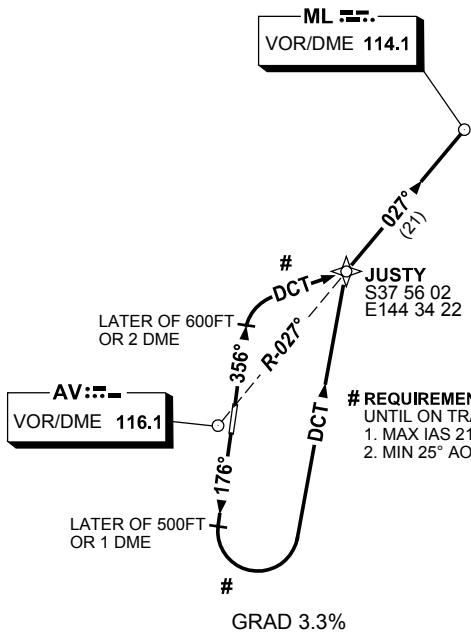
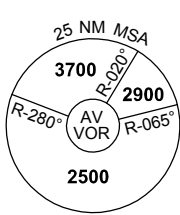
ATIS (AWIS AH) 118.2 116.1	AV APP 133.55	TWR 120.1 314.6	FIA (AH) ML CEN 135.7	CTAF+AFRU (AH) 120.1	AFRU+PAL (AH) 120.1	Bearings are Magnetic Elevations in FEET AMSL
-------------------------------	------------------	--------------------	--------------------------	-------------------------	------------------------	--

NOT TO SCALE



**SPEED
MAX IAS 250KT
BLW 10,000FT**

**CLASS D SPEED
LIMITS APPLY**



**# REQUIREMENT FOR AIRSPACE CONTAINMENT
UNTIL ON TRACK TO JUSTY:**
1. MAX IAS 210KT.
2. MIN 25° AOB FM 160KT TO 210KT.

10 NM MSA 2500

GRAD 3.3%

JUSTY TWO DEPARTURE

RWY 18

- Track 176°
- At the later of 500FT or 1 DME turn LEFT track DCT to JUSTY #
- Turn RIGHT, track 027° to ML VOR, thence as cleared

RWY 36

- Track 356°
- At the later of 600FT or 2 DME turn RIGHT track DCT to JUSTY #
- Turn LEFT, track 027° to ML VOR, thence as cleared

Changes: SPEED REST, Editorial.

MAVDP02-153

