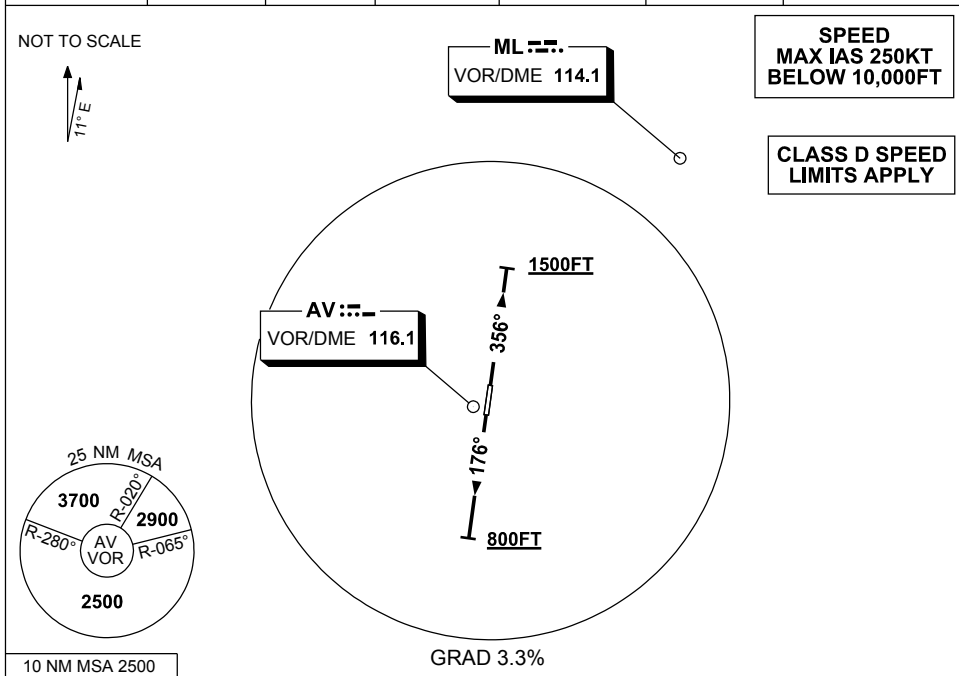


**STANDARD INSTRUMENT DEPARTURES (SID)
 AVALON FOUR DEPARTURE (RADAR) - ALL RUNWAYS
 AVALON, VIC (YMAV)**

24 MAY 2018

ATIS (AWIS AH) 118.2 116.1	AV APP 133.55	TWR 120.1	FIA (AH) ML CEN 135.7	CTAF+AFRU (AH) 120.1	AFRU+PAL (AH) 120.1	Bearings are Magnetic Elevations in FEET AMSL
-------------------------------	------------------	--------------	--------------------------	-------------------------	------------------------	--



AVALON FOUR DEPARTURE (RADAR)

RWY 18

- Track 176°
- At or ABV 800FT turn to assigned heading
- Contact AV Approach for Radar Vector

RWY 36

- Track 356°
- At or ABV 1500FT turn to assigned heading
- Contact AV Approach for Radar Vector

COMMUNICATIONS FAILURE PROCEDURE

On recognition of communication failure

- Squawk 7600
- Maintain last assigned vector for two minutes, and
- CLIMB IF NECESSARY TO MINIMUM SAFE ALTITUDE, to maintain terrain clearance, then
- proceed in accordance with the latest ATC route clearance acknowledged.

Changes: TWR FREQ 314.6 DCMSD.

MAVDP01-155