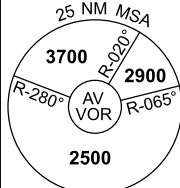


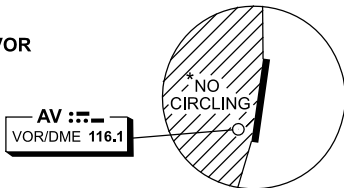
DME or GNSS ARRIVAL PROCEDURES AVALON, VIC (YMAV)

29 MAY 2014

ATIS (AWIS AH) 118.2 116.1	AV APP 133.55	TWR 120.1 314.6	FIA (AH) ML CEN 135.7	CTAF+AFRU (AH) 120.1	AFRU+PAL (AH) 120.1	Bearings are Magnetic Elevations in FEET AMSL
-------------------------------	------------------	--------------------	--------------------------	-------------------------	------------------------	--

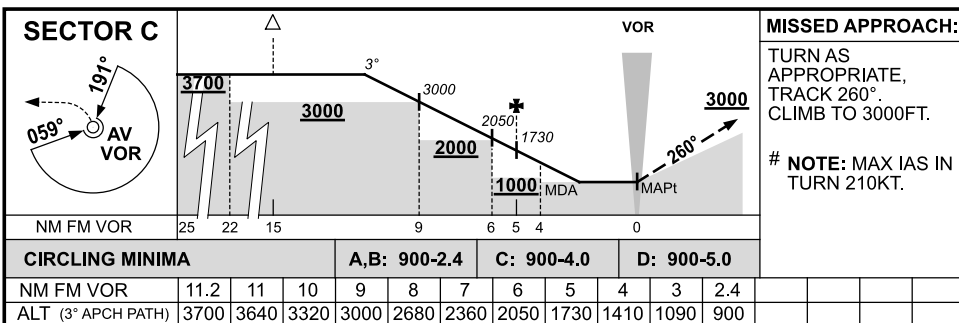
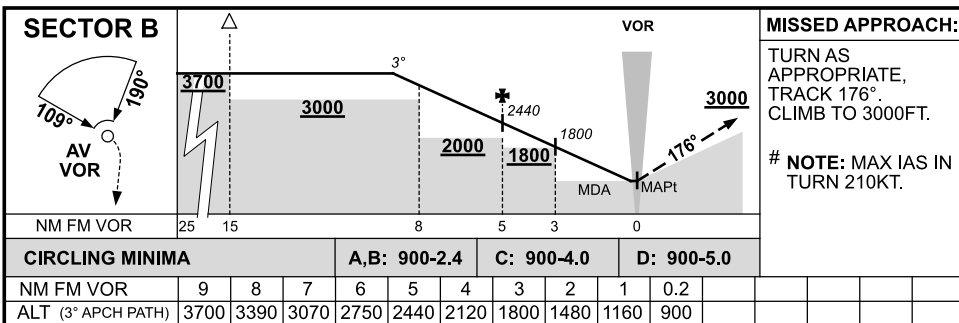
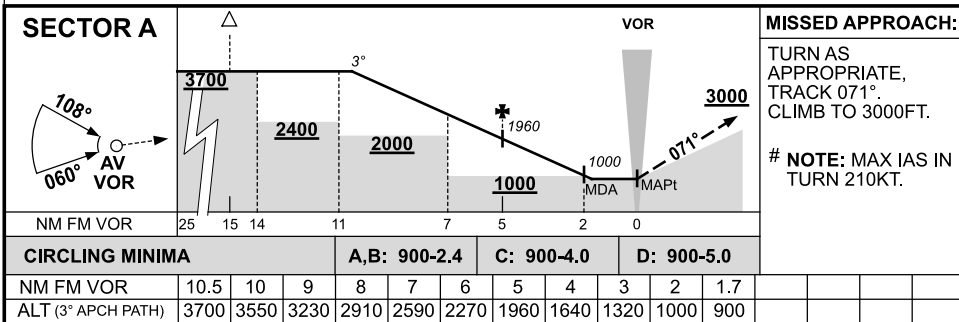


DME USING AV DME REFERENCE WAYPOINT AV VOR



10 NM MSA 2500

AD ELEV 35



Changes: FROM SUP H20/14.

MAVDG01-139