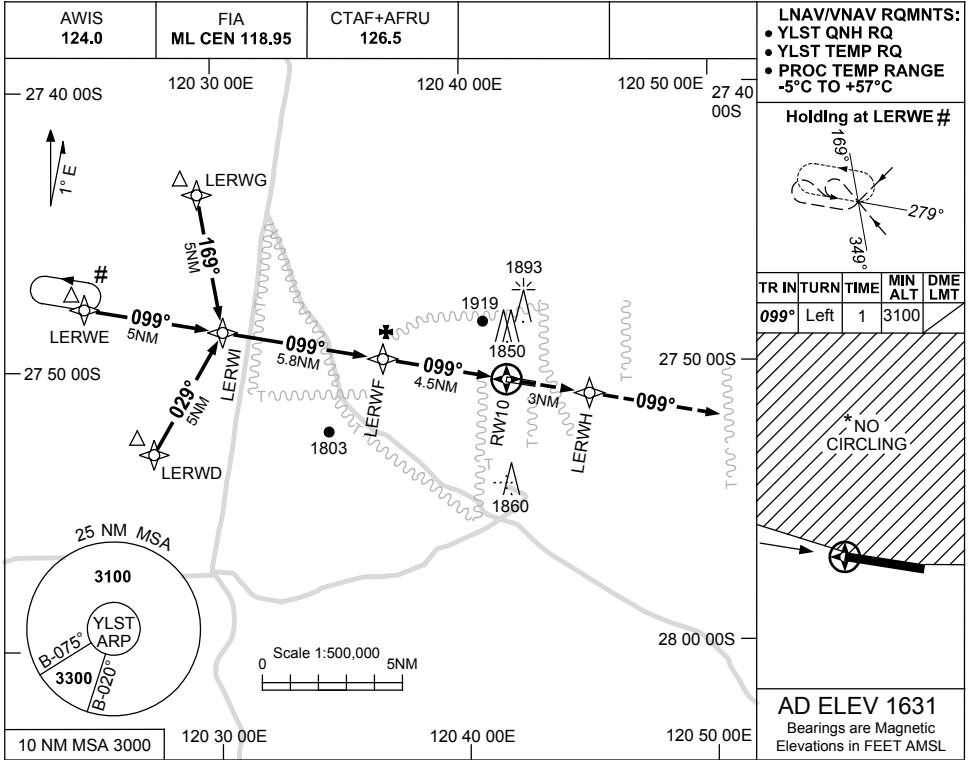


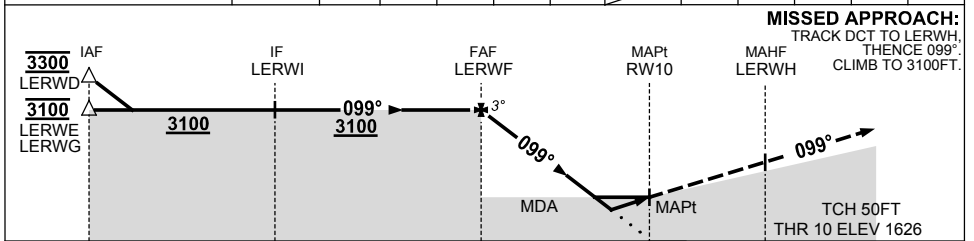
USE QNH

RNAV<sub>(GNSS)</sub> RWY 10  
LEINSTER, WA (YLST)

13 AUG 2020



NM TO NEXT WPT	LERWF	4	3	2	1.6	0.8	RW10					
ALT (3° APCH PATH)	3100	2950	2630	2310	2170	1940						



NM TO RW10: 15.3, 10.3, 4.5, 0, 3

**NOTES**

1. MAX IAS:  
INITIAL : 230KT.
- \* 2. NO CIRCLING NORTH OF RWY 10/28.
- # 3. ACFT MUST CTC YBLU PRIOR TO HOLD ON CTAF.

**CAUTION:** PROC IS OVERLAID BY PROC AT BELLEVUE.

CATEGORY	A	B	C	D
LNAV/VNAV	1940 (314-1.7)			NOT APPLICABLE
LNAV	2170 (539-3.1)			
CIRCLING*	2350 (719-2.4)	2450 (819-4.0)		
ALTERNATE	(1219-4.4)		(1319-6.0)	

Changes: LNAV/VNAV MNM, LERWD START ALT, MAPt, DIST/ALT TABLE, COORD FORMAT, Editorial. LSTGN01-164