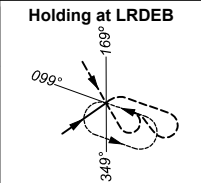
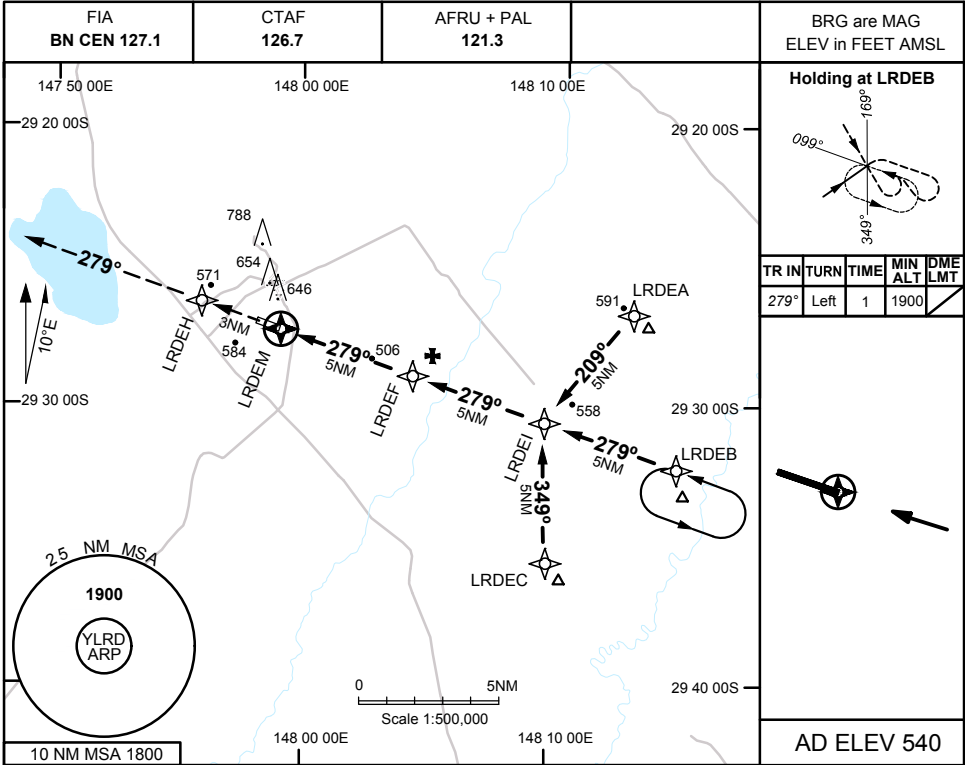


USE QNH

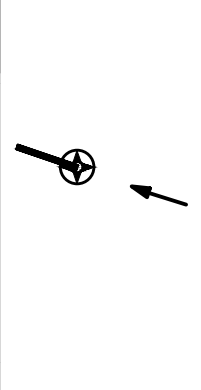
RNAV-E(GNSS)

17 JUN 2021

LIGHTNING RIDGE, NSW (YLRD)

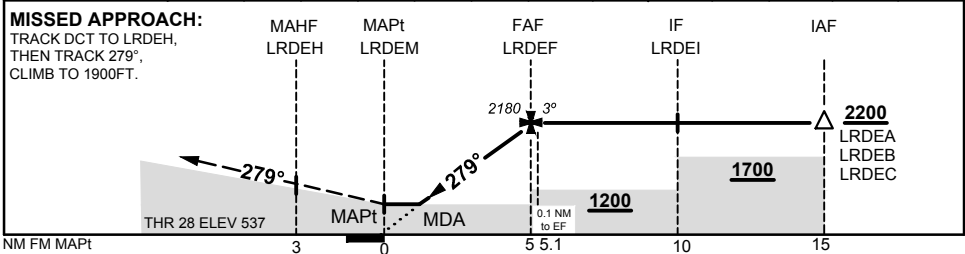


TR IN	TURN	TIME	MIN ALT	DME LMT
279°	Left	1	1900	10



AD ELEV 540

NM TO NEXT WPT	LRDEM	1.6	2	2.2	3	4	LRDEF	0.1				
ALT (3° APCH PATH)		1100	1220	1290	1540	1860	2180	2200				



CATEGORY	A	B	C	D
				NOT APPLICABLE
CIRCLING	1110 (570 - 2.4)		1290 (750 - 4.0)	
ALTERNATE	(1070 - 4.4)		(1250 - 6.0)	

NOTES
1. MAX IAS: INITIAL : 210KTS

Changes: THR ELEV, Editorial

LRDGN01-167