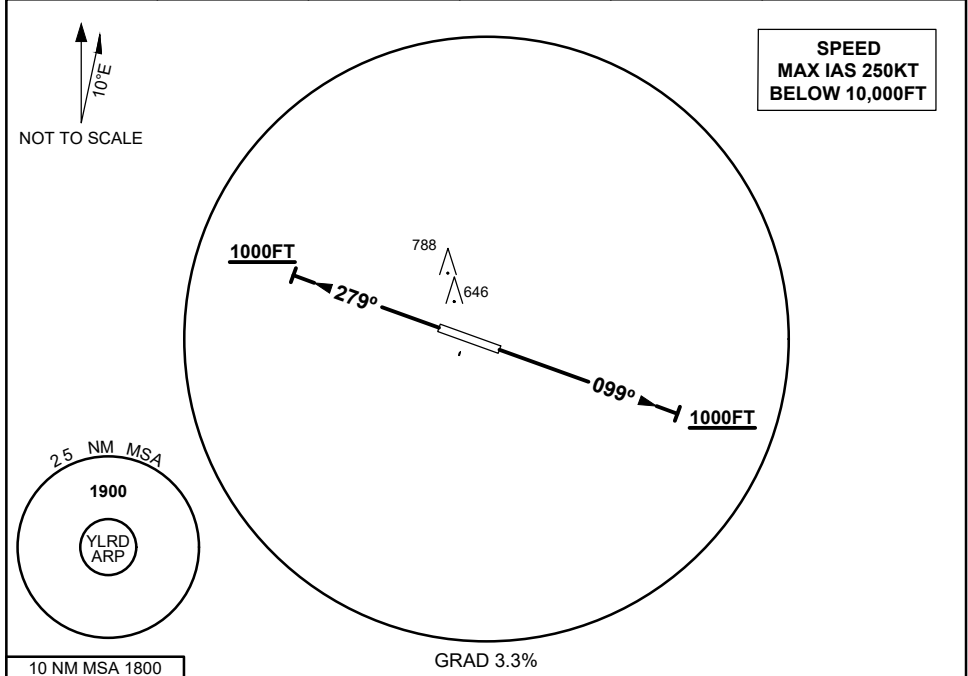


**STANDARD INSTRUMENT DEPARTURES (SID)
LIGHTNING RIDGE ONE DEPARTURE
LIGHTNING RIDGE, NSW (YLRD)**

16 JUN 2022

FIA BN CEN 127.1	CTAF 126.7	PAL + AA 121.3			Bearings are Magnetic Elevations in FEET AMSL
----------------------------	----------------------	--------------------------	--	--	--



10 NM MSA 1800	GRAD 3.3%	
<p>LIGHTNING RIDGE ONE DEPARTURE</p> <p>RWY 10</p> <ul style="list-style-type: none"> • Track 099° • AT or ABV 1000FT turn as required • Continue climb to 1900FT • Intercept flight plan route 		<p>RWY 28</p> <ul style="list-style-type: none"> • Track 279° • AT or ABV 1000FT turn as required • Continue climb to 1900FT • Intercept flight plan route

Changes: PAL+AA, Editorial

LRDDP01-171

