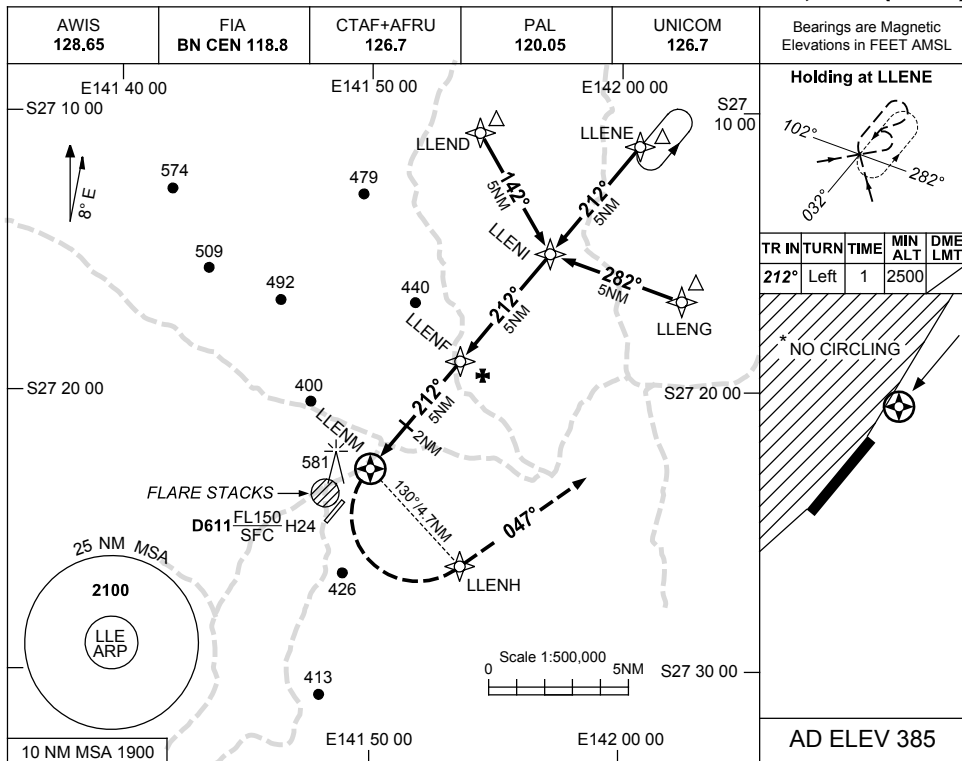


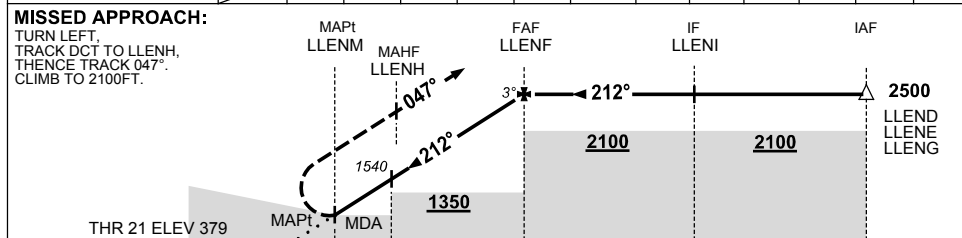
USE QNH

RNAV-Z(GNSS) RWY 21  
**BALLERA, QLD (YLLE)**

10 NOV 2016



NM TO NEXT WPT	LLENM	0.1	1	2	3	4	LLENF					
ALT (3° APCH PATH)		940	1220	1540	1860	2180	2500					



NM FM MAPt      1.5      0      2      5      10      15

**NOTES**

CATEGORY	A	B	C	D
S-I GNSS	940 (555-3.1)			NOT APPLICABLE
CIRCLING *	990 (605-2.4)		1090 (705-4.0)	
ALTERNATE	(1105-4.4)		(1205-6.0)	

- MAX IAS:  
 INITIAL : 210KT.  
 MAP TURN: 200KT.
- NO CIRCLING WEST OF RWY 03/21.

Changes: AFRU.

LLEGN02-149