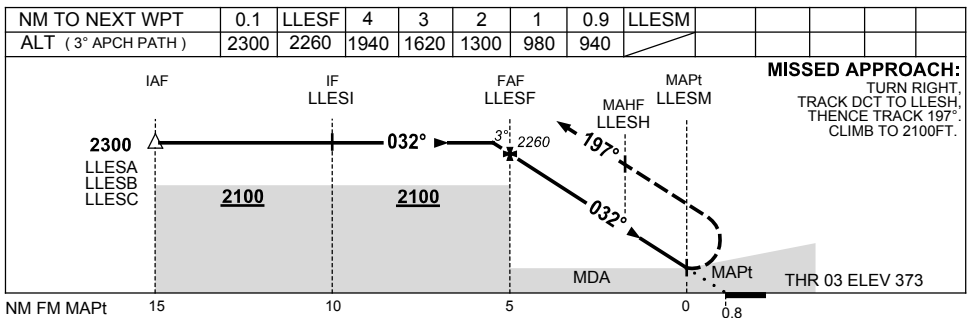
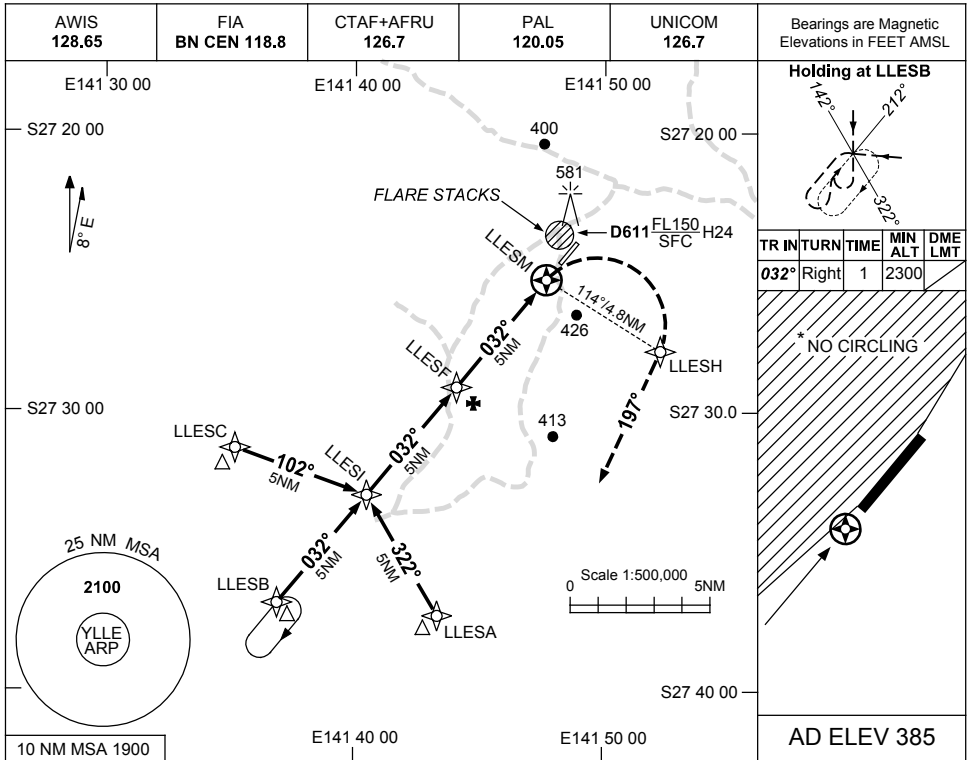


USE QNH

RNAV-Z_(GNSS) RWY 03
BALLERA, QLD (YLLE)

10 NOV 2016



CATEGORY	A	B	C	D
S-I GNSS	940 (567-3.2)			NOT APPLICABLE
CIRCLING *	990 (605-2.4)		1090 (705-4.0)	
ALTERNATE	(1105-4.4)		(1205-6.0)	

- NOTES**
- MAX IAS:
 INITIAL : 210KT,
 MAP TURN: 200KT.
 - NO CIRCLING WEST OF RWY 03/21.

Changes: AFRU.

LLEGN01-149