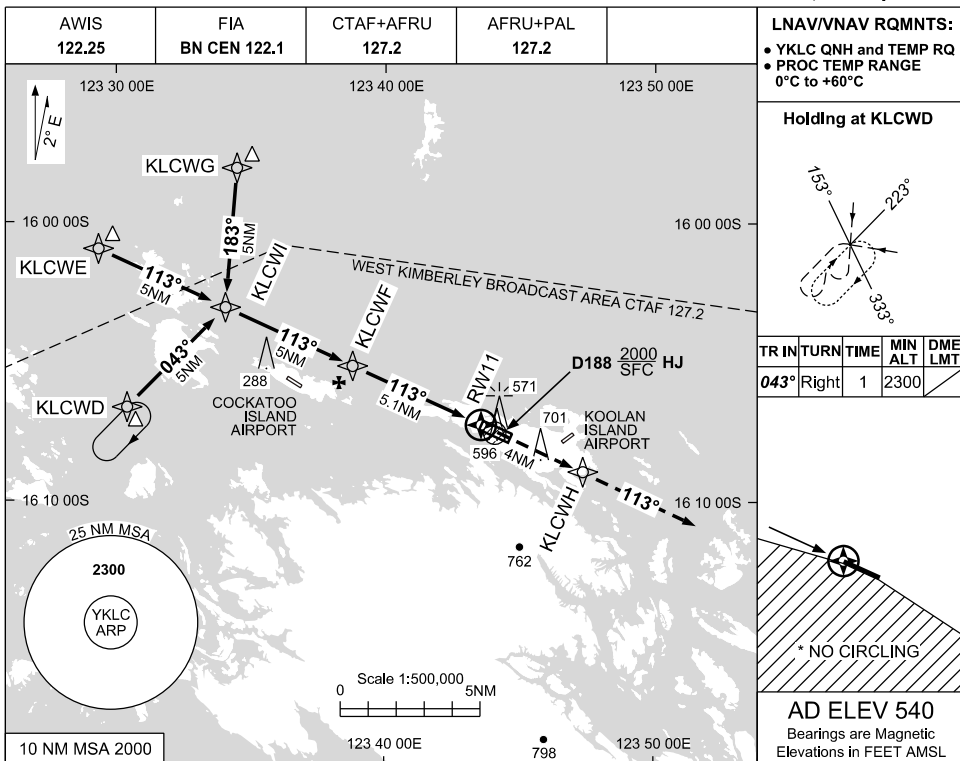


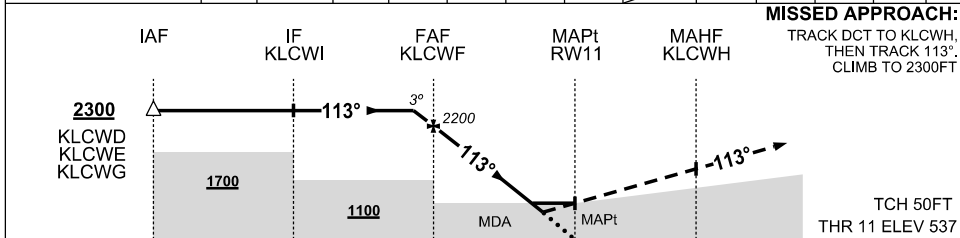
USE QNH

RNAV (GNSS) RWY 11
KOOLAN ISLAND/
KOOLAN CENTRAL, WA (YKLC)

17 JUN 2021



NM TO NEXT WPT	0.3	KLCWF	4	3	2	1.3	0.7	RW11				
ALT (3° APCH PATH)	2300	2200	1860	1540	1220	990	820					



NOTES

CATEGORY	A	B	C	D
LNAV/VNAV	820 (283-1.6)			
LNAV	990 (450-2.5)			
* CIRCLING	1140 (600-2.4)	1240(700-4.0)	1330(790-5.0)	
ALTERNATE	(1100-4.4)	(1200-6.0)	(1290-7.0)	

1. MAX IAS: INITIAL : 210KT
2. NO CIRCLING
3. S OF RWY 11/29
3. CAUTION: HIGH DENSITY VFR OPS REFER ERSA GEN SP-12

Changes: D188

KLCGN01-167

