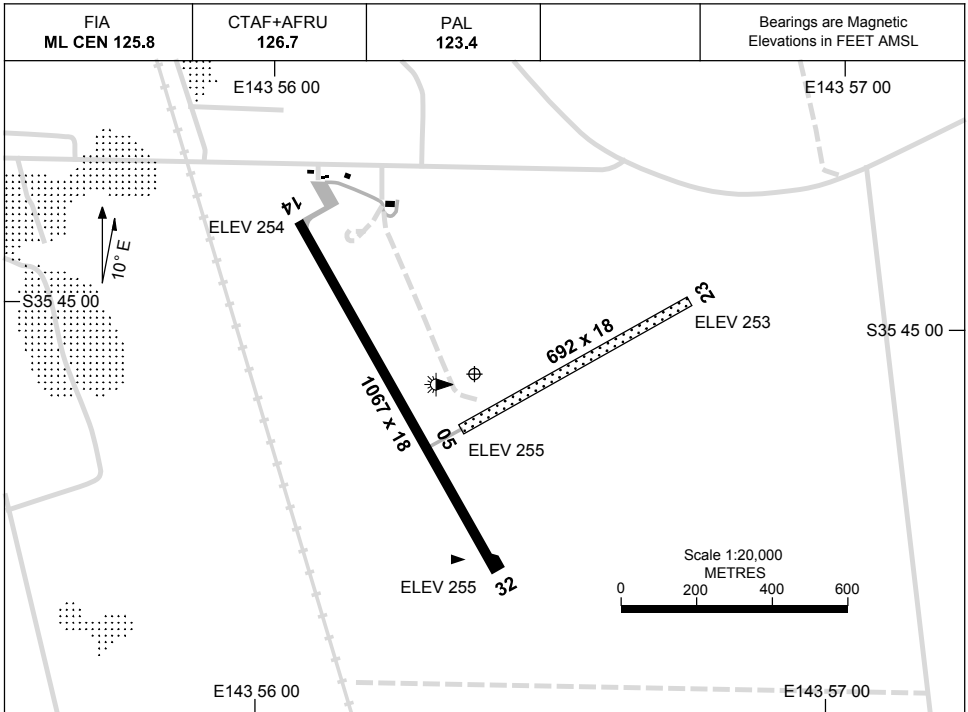


16 AUG 2018

AD ELEV 255
S35 45 05 E143 56 22

AERODROME CHART
KERANG, VIC (YKER)



	AERODROME LIGHTING	
RWY	RL : PAL 123.4 , SDBY	
14 ¹³⁹	LIRL	
³¹⁹ 32	LIRL	
05 ⁰⁴⁹	NIL	
²²⁹ 23	NIL	

NOTES

1. FIA FREQ 125.8 AVBL 2000FT.

Changes: AD ELEV, RWY 32 THR ELEV AND TURN NODE.

KERAD01-156