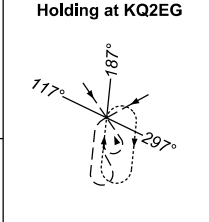
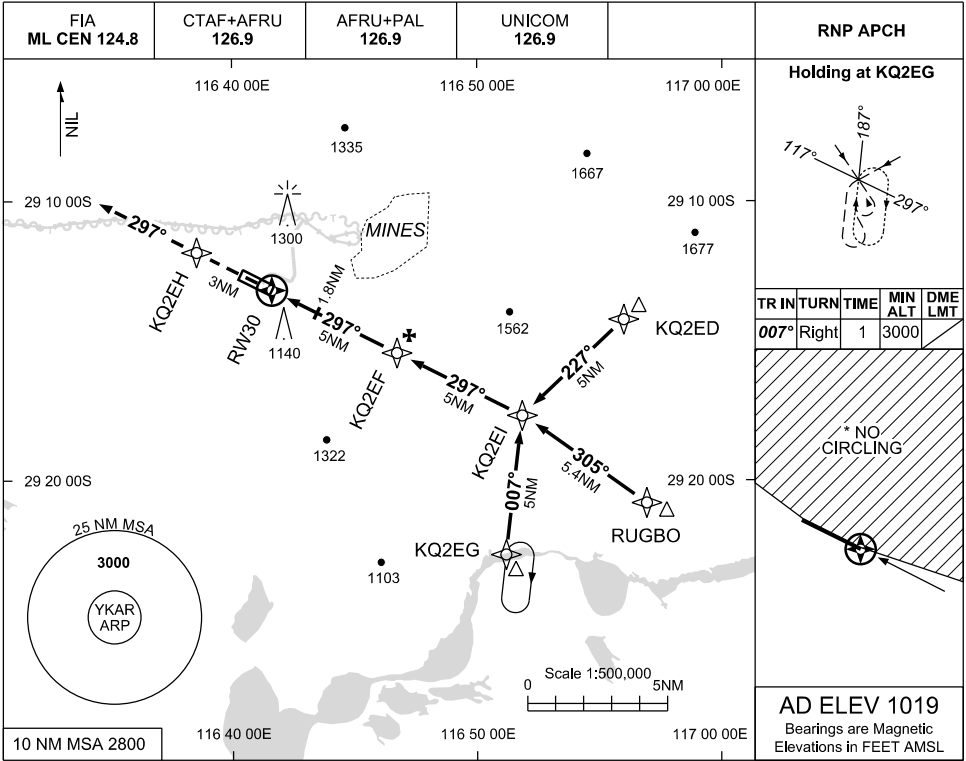


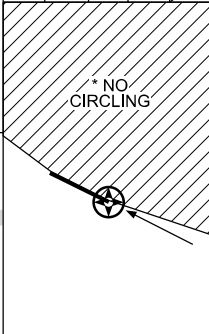
USE QNH

RNP RWY 30
KARARA, WA (YKAR)

7 SEP 2023

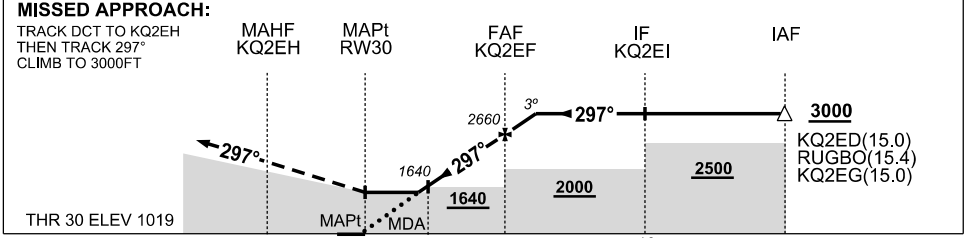


| TR IN | TURN | TIME | MIN ALT | DME LMT |
|-------|-------|------|---------|---------|
| 007° | Right | 1 | 3000 | |



AD ELEV 1019
 Bearings are Magnetic
 Elevations in FEET AMSL

| NM TO NEXT WPT | RW30 | 1.8 | 2 | 3 | 4 | KQ2EF | 1.1 | | | | |
|--------------------|------|------|------|------|------|-------|------|--|--|--|--|
| ALT (3° APCH PATH) | | 1640 | 1710 | 2020 | 2340 | 2660 | 3000 | | | | |



NOTES

| CATEGORY | A | B | C | D |
|------------|----------------|---|----------------|----------------|
| LNAV | 1640 (621-3.4) | | | NOT AUTHORISED |
| CIRCLING * | 1740 (721-2.4) | | 1910 (891-4.0) | |
| ALTERNATE | (1221-4.4) | | (1391-6.0) | |

- 1. MAX IAS : INITIAL: 210KT
- *2. NO CIRCLING NORTH OF RWY 12/30.

Changes: CHART TITLE, PBN SPECIFICATION BOX, EDITORIAL

KARGN02-176

