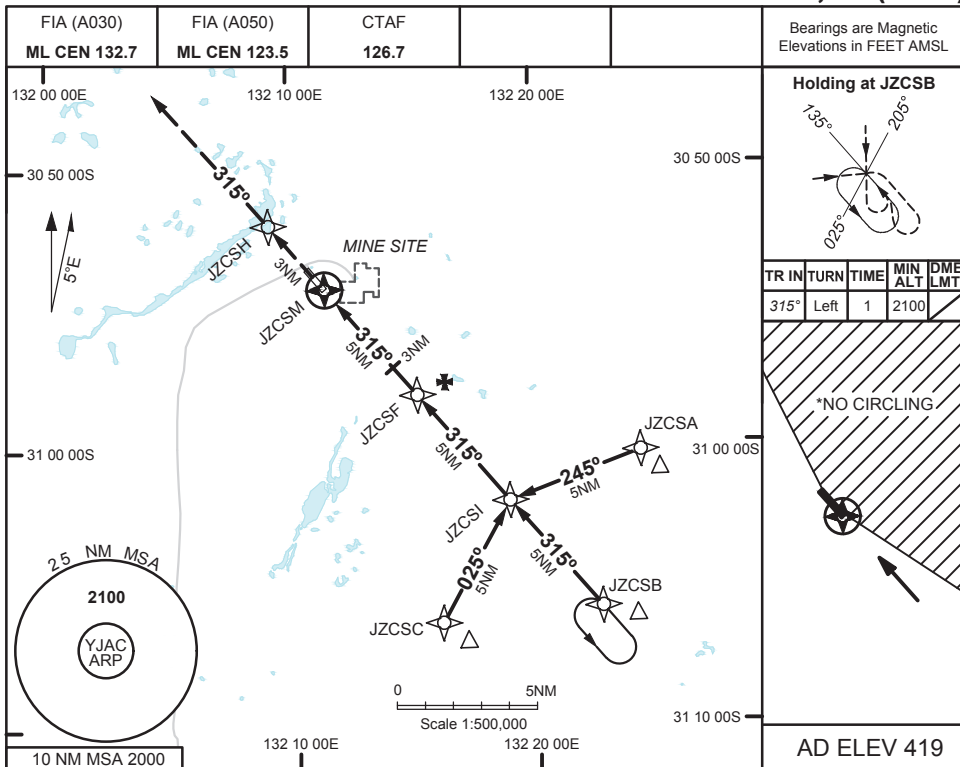


27 FEB 2020

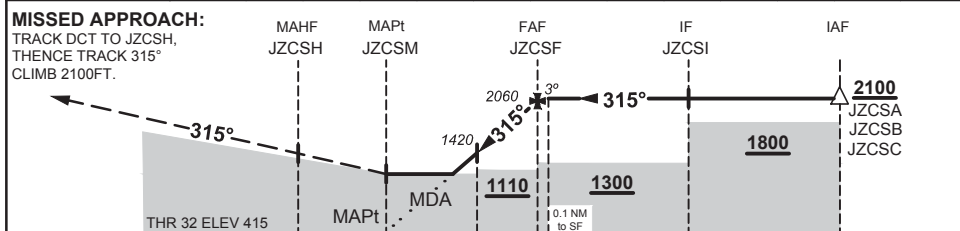
USE QNH

RNAV-S (GNSS)

JACINTH AMBROSIA, SA (YJAC)



NM TO NEXT WPT	JZCSM	1.9	2	2.3	3	4	JZCSF	0.1				
ALT (3° APCH PATH)		1090	1100	1200	1420	1740	2060	2100				



NOTES

- MAX IAS: INITIAL : 210KTS
- NO CIRCLING NORTH OF RWY 14/32

CATEGORY	A	B	C	D
LNAV				NOT APPLICABLE
CIRCLING	1090 (671 - 2.4)		1200 (781 - 4.0)	
ALTERNATE	(1171 - 4.4)		(1281 - 6.0)	

Changes: FROM SUP H127/19

JACGN02-162

