

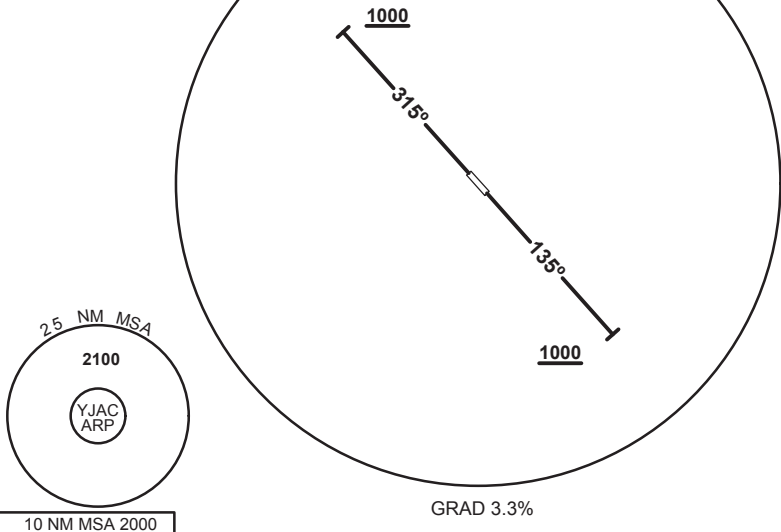
27 FEB 2020

STANDARD INSTRUMENT DEPARTURE  
JACINTH AMBROSIA ONE DEPARTURE  
JACINTH AMBROSIA, SA (YJAC)

FIA (A030) ML CEN 132.7	FIA (A050) ML CEN 123.5	CTAF 126.7		BRG are MAG ELEV in FT AMSL
----------------------------	----------------------------	---------------	--	--------------------------------



**SPEED**  
MAX IAS 250KT  
BELOW 10,000FT



**JACINTH AMBROSIA ONE DEPARTURE**

**RWY 14**

- Track 135°
- AT or ABV 1000FT turn as required
- Continue climb to 2100FT
- Intercept flight plan route

**RWY 32**

- Track 315°
- AT or ABV 1000FT turn as required
- Continue climb to 2100FT
- Intercept flight plan route

**NOTES**

- NIL -

Changes: FROM SUP H127/19

JACDP01-162

